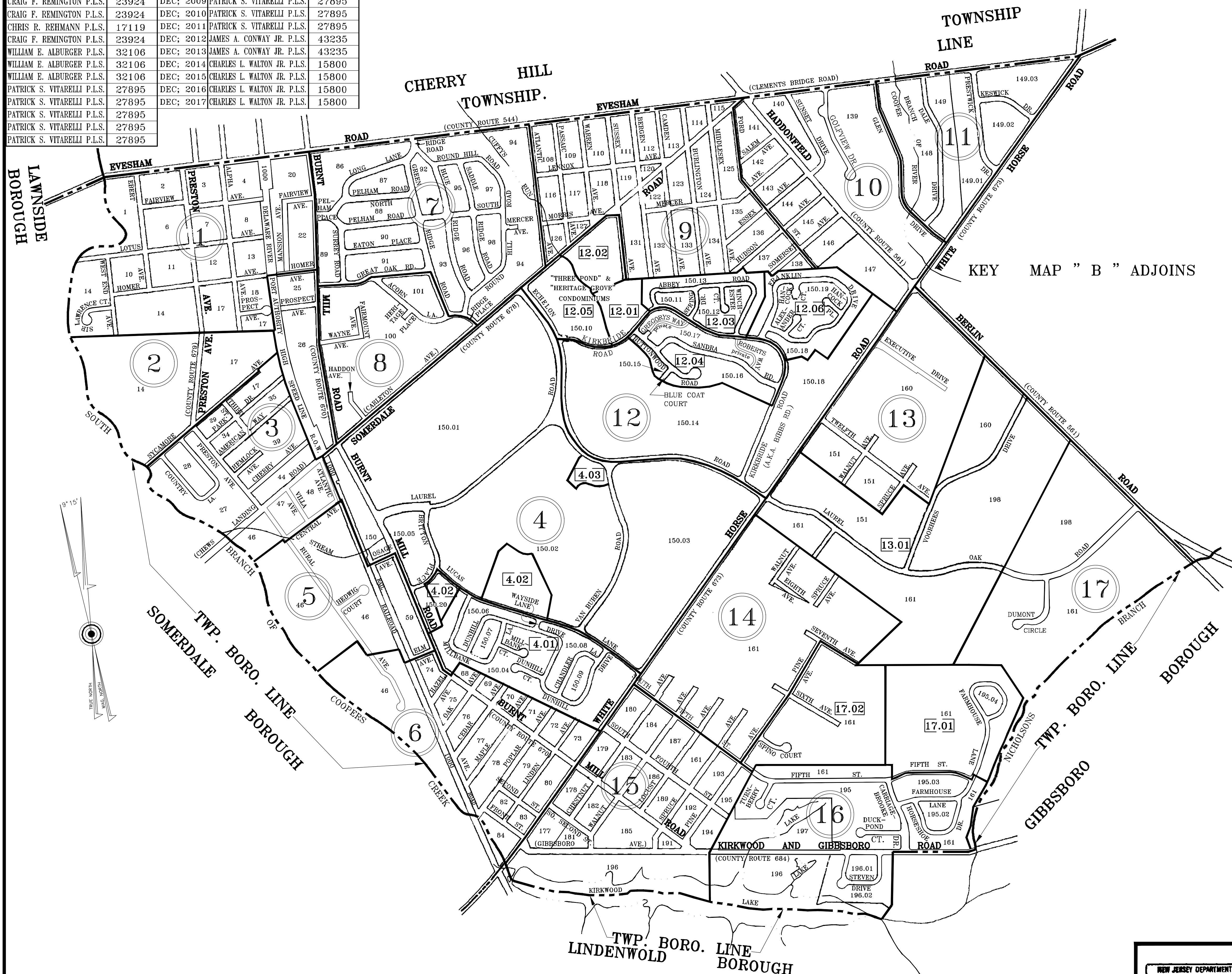


# KEY MAP "A"

REVISIONS		REVISIONS		
NAME	NO.	DATE	NAME	NO.
CRAIG F. REMINGTON P.L.S.	23924	DEC; 2009	PATRICK S. VITARELLI P.L.S.	27895
CRAIG F. REMINGTON P.L.S.	23924	DEC; 2010	PATRICK S. VITARELLI P.L.S.	27895
CHRIS R. REHMANN P.L.S.	17119	DEC; 2011	PATRICK S. VITARELLI P.L.S.	27895
CRAIG F. REMINGTON P.L.S.	23924	DEC; 2012	JAMES A. CONWAY JR. P.L.S.	43235
WILLIAM E. ALBURGER P.L.S.	32106	DEC; 2013	JAMES A. CONWAY JR. P.L.S.	43235
WILLIAM E. ALBURGER P.L.S.	32106	DEC; 2014	CHARLES L. WALTON JR. P.L.S.	15800
WILLIAM E. ALBURGER P.L.S.	32106	DEC; 2015	CHARLES L. WALTON JR. P.L.S.	15800
PATRICK S. VITARELLI P.L.S.	27895	DEC; 2016	CHARLES L. WALTON JR. P.L.S.	15800
PATRICK S. VITARELLI P.L.S.	27895	DEC; 2017	CHARLES L. WALTON JR. P.L.S.	15800
PATRICK S. VITARELLI P.L.S.	27895			
PATRICK S. VITARELLI P.L.S.	27895			



## LEGEND

- 17 DETAIL PLATE NUMBER
- 12.04 DETAIL PLATE NUMBER
- 195.01 BLOCK NUMBER
- PLATE DELINEATION LINE

## NOTES:

BLOCK AND LOT NUMBERS SHOWN ON ABOVE PLATES APPLY TO THIS MAP ONLY WHICH SUPERSEDES MAP APPROVED 11/19/1929

THE AREAS, BOUNDARIES AND DIMENSIONS SHOWN ON THIS TAX MAP ARE DERIVED FROM GROUND SURVEYS, AERIAL SURVEYS AND RECORDED PLANS, MAPS, DEEDS AND WILLS AND ARE TO BE USED FOR ASSESSMENT PURPOSES ONLY.

BLOCK NUMBERS 49 TO 55 INC. 60 TO 67 INC. AND 128 TO 130 INC. HAVE BEEN ELIMINATED.

BURNT MILL ROAD ALSO KNOWN AS HADDON AVE., HADDONFIELD AVE., LAKESIDE AVE., PETERSONS MILL ROAD AND THIRD STREET.

WHITE HORSE ROAD ALSO KNOWN AS GLENDALE AVE. AND MOORESTOWN ROAD

TAX MAPS ARE NOT FOR TITLE PURPOSES!

THIS SHEET IS A SCANNED COPY OF THE TAX MAP PREPARED BY ROBERTSON & JOHNSON, DATED: OCT. 1, 1960. AS A SCANNED COPY SINCE 1993, HAS BEEN UPGRADED ANNUALLY BY USE OF COMPUTER AIDED DRAFTING/DESIGN (CAD/D) AND COORDINATE GEOMETRY (COGO).

ORIGINAL APPROVED MAP IS ON FILE IN THE MUNICIPAL ASSESSORS OFFICE.

REVISED: OCTOBER, 1, 1964 (A.C. ROBERTSON)

**TAX MAP**

**TOWNSHIP OF VOORHEES**

CAMDEN COUNTY, NEW JERSEY

SCALE: 1"=600'      DATE: OCT; 1, 1960

**ROBERTSON & JOHNSON**

CIVIL ENGINEERS & SURVEYORS

BARRINGTON, NEW JERSEY

TO SHOW CONDITIONS AS OF 10-01-2017

NEW JERSEY DEPARTMENT OF THE TREASURY  
DIVISION OF TAXATION  
ENGINEERING & RAILROAD TAX BUREAU

APPROVED AS A TAX MAP PURSUANT TO THE PROVISIONS OF CHAPTER 176, LAWS OF 1918, ETC. FOR THE DIRECTOR, DIVISION OF TAXATION

*C.C. Baner*

BY: *C.C. Baner*      DATE: NOV 15 1963      SERIAL NO. 406

"I HEREBY CERTIFY THAT THIS MAP HAS BEEN REVISED UNDER MY IMMEDIATE SUPERVISION, AND COMPLIES WITH THE LAWS OF THE STATE OF NEW JERSEY".

L.S. LICENSE NO. \_\_\_\_\_

*I hereby certify that this map and the survey have been made under my immediate supervision, and complies with the laws of the State of N.J.*

*Robertson & Johnson*  
P.E. & L.S. LICENSE NO. 3256

File Name: F:\TAX-MAP\_CAD-16\_2017\pg-keya17\_TRANS.dwg      Saved On: 1/23/2018 10:34:53 AM      Saved By: hlivingston