

KEY MAP "B"

TAX MAP

TOWNSHIP OF VOORHEES

CAMDEN COUNTY, NEW JERSEY

SCALE: 1"=600' DATE: OCT. 1, 1961

CHARLES L. WALTON JR., P.E. & L.S.

ENVIRONMENTAL RESOLUTIONS, INC.
525 FELLOWSHIP ROAD SUITE 300
MT. LAUREL, NEW JERSEY 08054

TO SHOW CONDITIONS AS OF 10-01-2017

REVISED: OCTOBER, 1, 1964 (A.C. ROBERTSON)

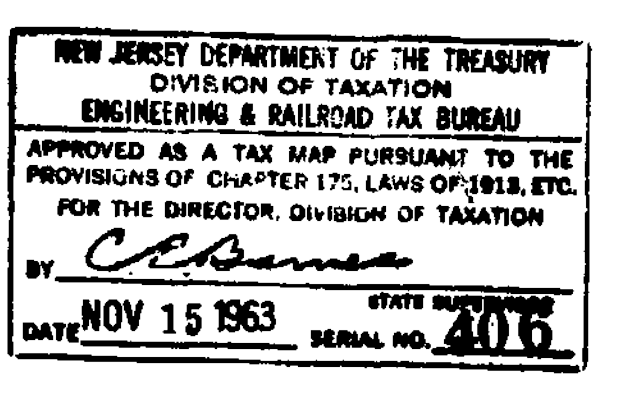
NOTES:
TAX MAPS ARE NOT FOR TITLE PURPOSES!
BLOCK AND LOT NUMBERS SHOWN ON ABOVE PLATES APPLY TO THIS MAP ONLY WHICH SUPERSEDES MAP APPROVED 11/19/1929

WHITE HORSE ROAD ALSO KNOWN AS GLENDALE AVE. AND MOORESTOWN ROAD.

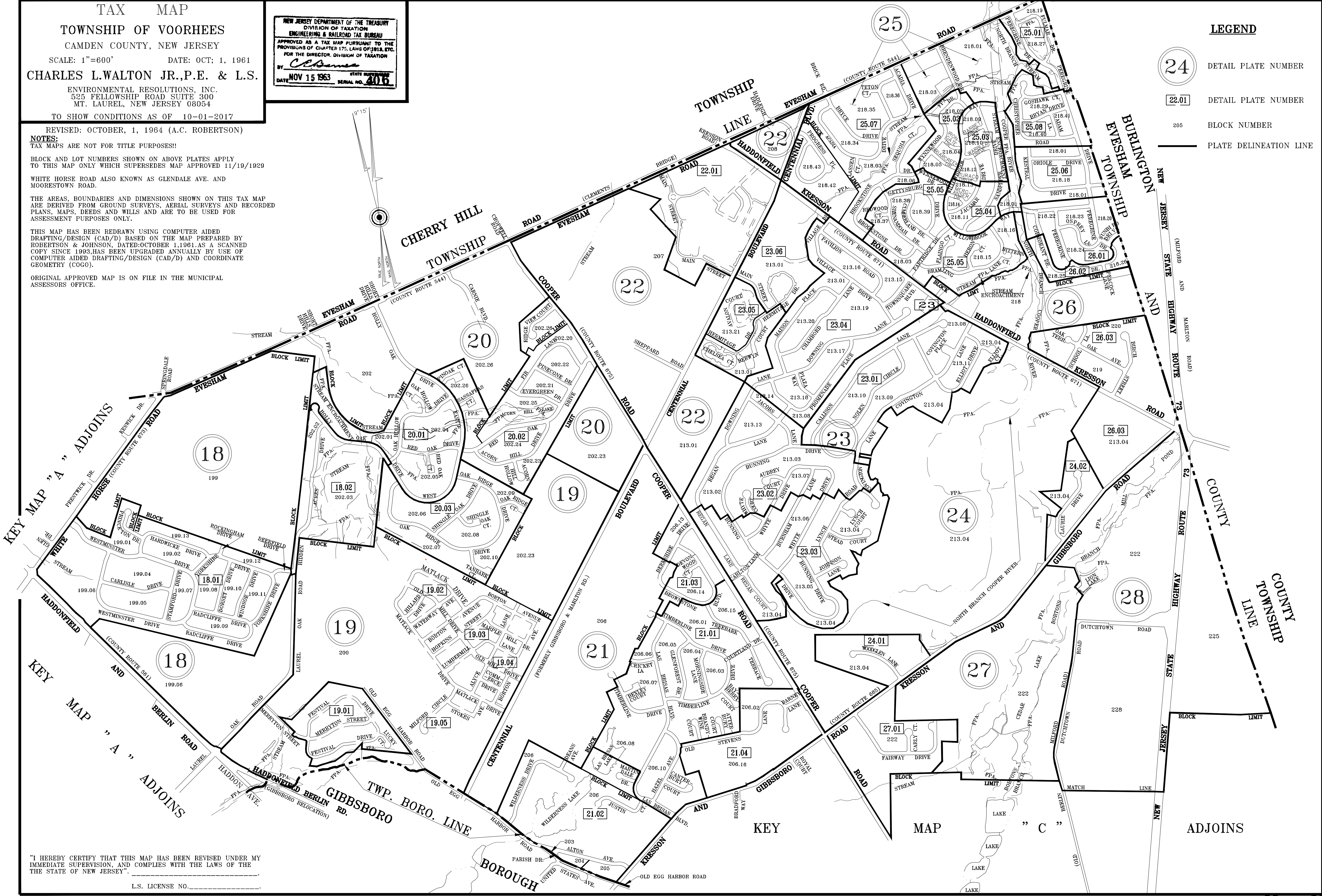
THE AREAS, BOUNDARIES AND DIMENSIONS SHOWN ON THIS TAX MAP ARE DERIVED FROM GROUND SURVEYS, AERIAL SURVEYS AND RECORDED PLANS, MAPS, DEEDS AND WILLS AND ARE TO BE USED FOR ASSESSMENT PURPOSES ONLY.

THIS MAP HAS BEEN REDRAWN USING COMPUTER AIDED DRAFTING/DESIGN (CAD/D) BASED ON THE MAP PREPARED BY ROBERTSON & JOHNSON, DATED: OCTOBER 1, 1961. AS A SCANNED COPY SINCE 1993, HAS BEEN UPGRADED ANNUALLY BY USE OF COMPUTER AIDED DRAFTING/DESIGN (CAD/D) AND COORDINATE GEOMETRY (COGO).

ORIGINAL APPROVED MAP IS ON FILE IN THE MUNICIPAL ASSESSORS OFFICE.



- LEGEND**
- (24) DETAIL PLATE NUMBER
 - [22.01] DETAIL PLATE NUMBER
 - 205 BLOCK NUMBER
 - PLATE DELINEATION LINE



"I HEREBY CERTIFY THAT THIS MAP HAS BEEN REVISED UNDER MY IMMEDIATE SUPERVISION, AND COMPLIES WITH THE LAWS OF THE STATE OF NEW JERSEY".

L.S. LICENSE NO. _____

File Name: F:\TAX-MAP_CAD-16_2017\pg-keyb17_TRANS.dwg Saved On: 1/23/2018 10:00:50 AM Saved By: hlivingston

KEY MAP "B"