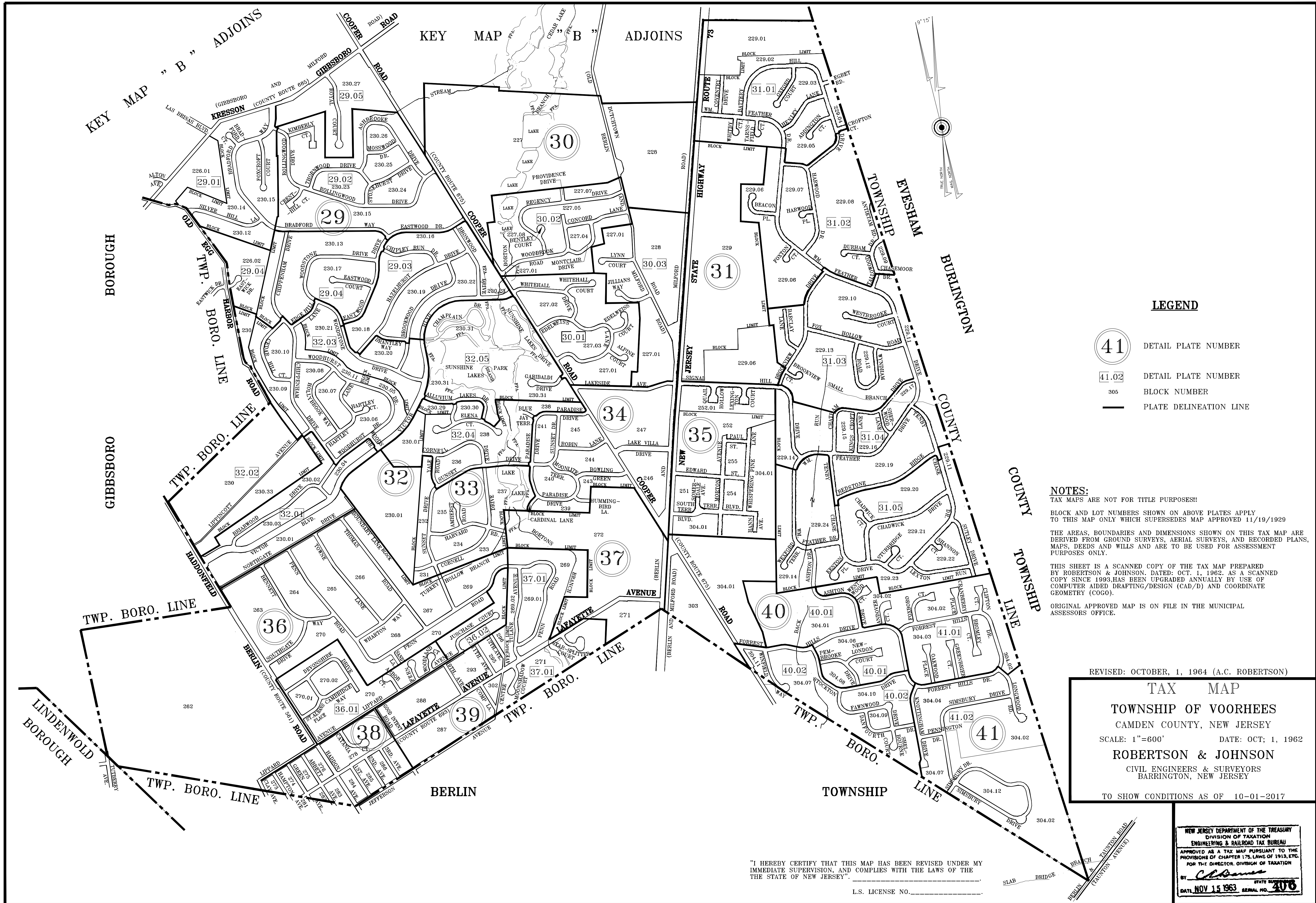


File Name: F:\TAX-MAP\_CAD-16\_2017\pg-keyc17\_TRANS.dwg

Saved On: 1/22/2018 4:33:11 PM

Saved By: hivingston



**LEGEND**

41 DETAIL PLATE NUMBER

41.02 DETAIL PLATE NUMBER

305 BLOCK NUMBER

— PLATE DELINEATION LINE

**NOTES:**  
 TAX MAPS ARE NOT FOR TITLE PURPOSES!  
 BLOCK AND LOT NUMBERS SHOWN ON ABOVE PLATES APPLY TO THIS MAP ONLY WHICH SUPERSEDES MAP APPROVED 11/19/1929

THE AREAS, BOUNDARIES AND DIMENSIONS SHOWN ON THIS TAX MAP ARE DERIVED FROM GROUND SURVEYS, AERIAL SURVEYS, AND RECORDED PLANS, MAPS, DEEDS AND WILLS AND ARE TO BE USED FOR ASSESSMENT PURPOSES ONLY.

THIS SHEET IS A SCANNED COPY OF THE TAX MAP PREPARED BY ROBERTSON & JOHNSON, DATED: OCT. 1, 1962. AS A SCANNED COPY SINCE 1993 HAS BEEN UPGRADED ANNUALLY BY USE OF COMPUTER AIDED DRAFTING/DESIGN (CAD/D) AND COORDINATE GEOMETRY (COGO).

ORIGINAL APPROVED MAP IS ON FILE IN THE MUNICIPAL ASSESSORS OFFICE.

REVISED: OCTOBER, 1, 1964 (A.C. ROBERTSON)

**TAX MAP**

**TOWNSHIP OF VOORHEES**  
 CAMDEN COUNTY, NEW JERSEY

SCALE: 1"=600' DATE: OCT, 1, 1962

**ROBERTSON & JOHNSON**  
 CIVIL ENGINEERS & SURVEYORS  
 BARRINGTON, NEW JERSEY

TO SHOW CONDITIONS AS OF 10-01-2017

NEW JERSEY DEPARTMENT OF THE TREASURY  
 DIVISION OF TAXATION  
 ENGINEERING & RAILROAD TAX BUREAU

APPROVED AS A TAX MAP PURSUANT TO THE PROVISIONS OF CHAPTER 175, LAWS OF 1913, ETC. FOR THE DIRECTOR, DIVISION OF TAXATION

BY *Cl. Barnes*  
 DATE: NOV 15 1963 SERIAL NO. 306

"I HEREBY CERTIFY THAT THIS MAP HAS BEEN REVISED UNDER MY IMMEDIATE SUPERVISION, AND COMPLIES WITH THE LAWS OF THE STATE OF NEW JERSEY".

L.S. LICENSE NO. \_\_\_\_\_