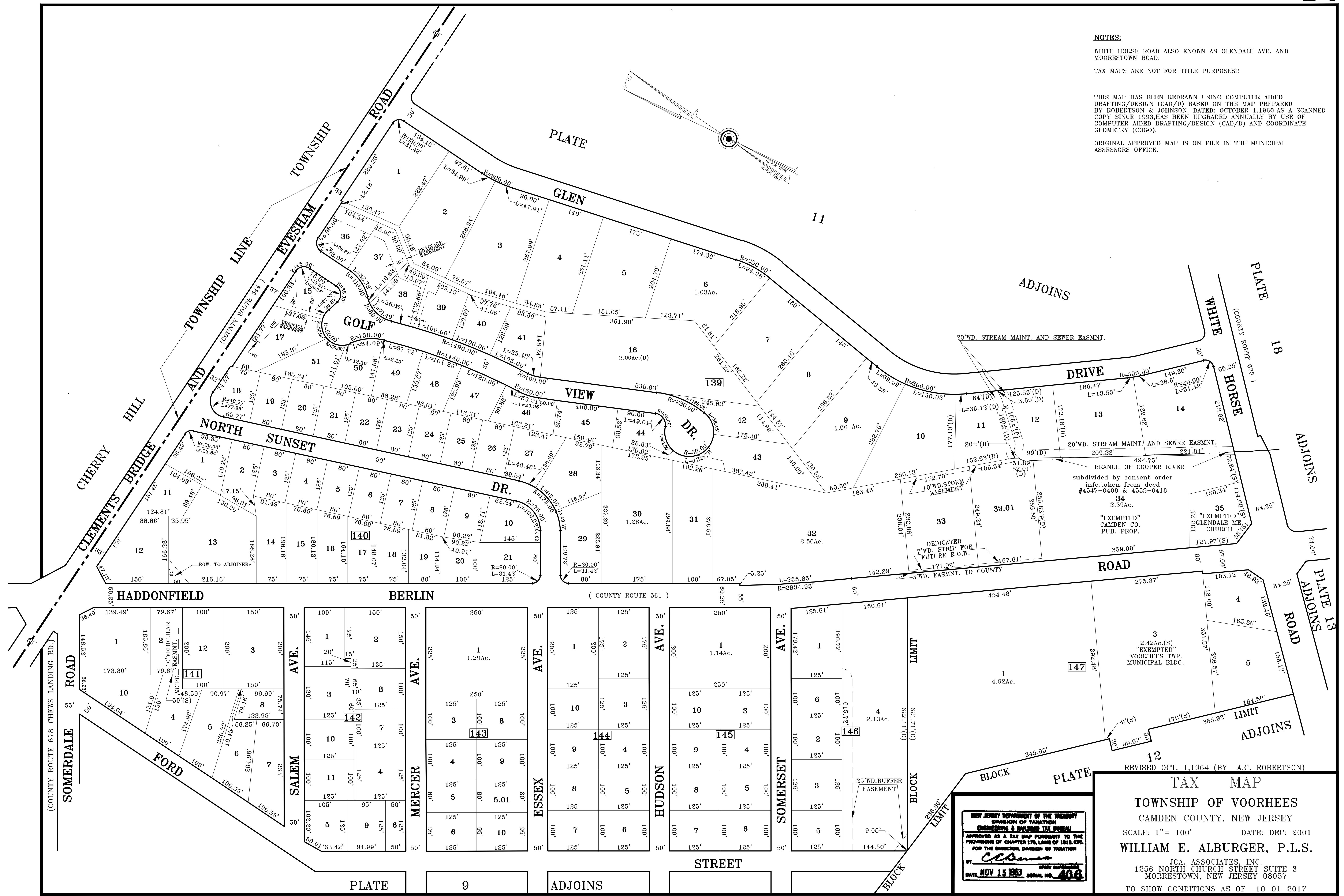


NOTES:
 WHITE HORSE ROAD ALSO KNOWN AS GLENDALE AVE. AND MOORESTOWN ROAD.
 TAX MAPS ARE NOT FOR TITLE PURPOSES!!

THIS MAP HAS BEEN REDRAWN USING COMPUTER AIDED DRAFTING/DESIGN (CAD/D) BASED ON THE MAP PREPARED BY ROBERTSON & JOHNSON, DATED: OCTOBER 1, 1960. AS A SCANNED COPY SINCE 1993, HAS BEEN UPGRADED ANNUALLY BY USE OF COMPUTER AIDED DRAFTING/DESIGN (CAD/D) AND COORDINATE GEOMETRY (COGO).

ORIGINAL APPROVED MAP IS ON FILE IN THE MUNICIPAL ASSESSORS OFFICE.



NEW JERSEY DEPARTMENT OF THE TREASURY
 DIVISION OF TAXATION
 ENGINEERING & BUILDING TAX BUREAU
 APPROVED AS A TAX MAP PURSUANT TO THE
 PROVISIONS OF CHAPTER 17A, LAWS OF 1915, ETC.
 FOR THE DIRECTOR, DIVISION OF TAXATION
 BY: *C. Deane*
 DATE: NOV 15 2003

REVISED OCT. 1, 1964 (BY A.C. ROBERTSON)
TAX MAP
TOWNSHIP OF VOORHEES
 CAMDEN COUNTY, NEW JERSEY
 SCALE: 1" = 100' DATE: DEC; 2001
WILLIAM E. ALBURGER, P.L.S.
 JCA ASSOCIATES, INC.
 1256 NORTH CHURCH STREET SUITE 3
 MORRESTOWN, NEW JERSEY 08057
 TO SHOW CONDITIONS AS OF 10-01-2017