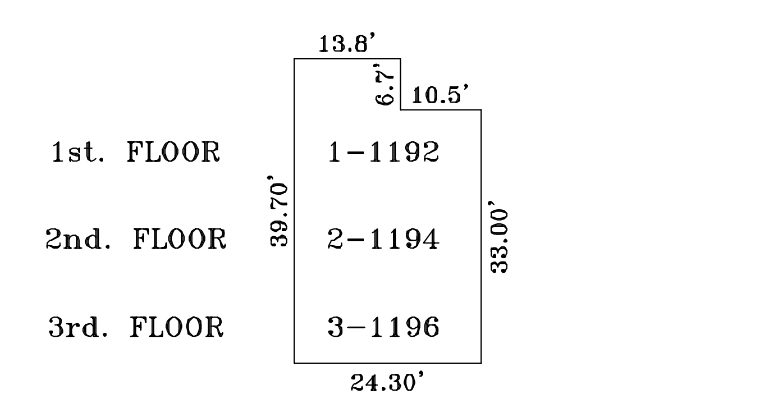
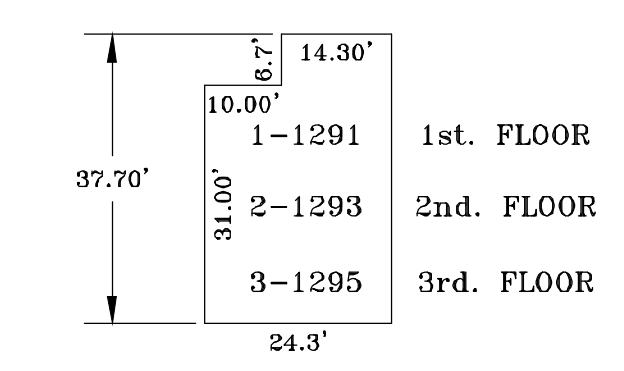


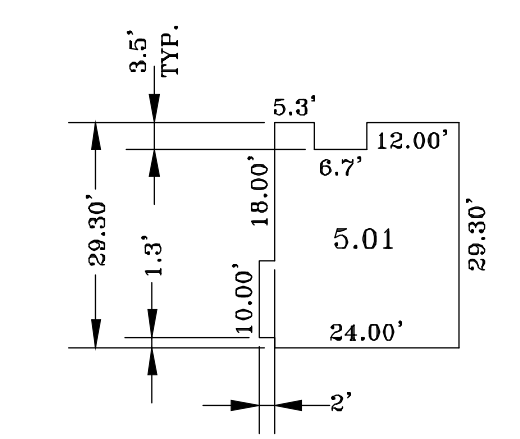
HERITAGE GROVE 3 STORY CONDOS  
 BUILDINGS NO. 1,2 & 3-(6 UNITS EACH)  
 BUILDINGS NO. 7 & 8-(12 UNITS EACH)  
 BUILDING NO. 9-(6 UNITS)  
 48 TOTAL UNITS



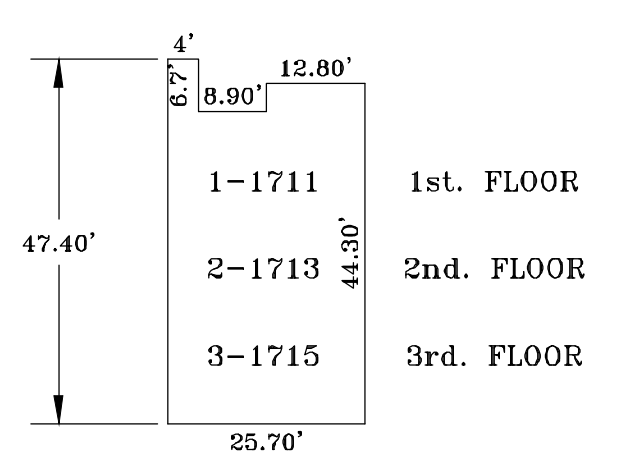
HERITAGE GROVE 3 STORY CONDOS  
 BUILDINGS NO. 1,2 & 3-(6 UNITS EACH)  
 BUILDINGS NO.7 & 8-(6 UNITS EACH)  
 TOTAL 30 UNITS



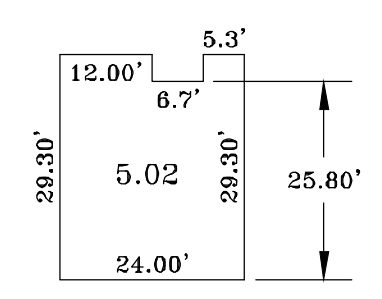
HERITAGE GROVE 3 STORY CONDOS  
 BUILDING NO. 4-(12 UNITS)



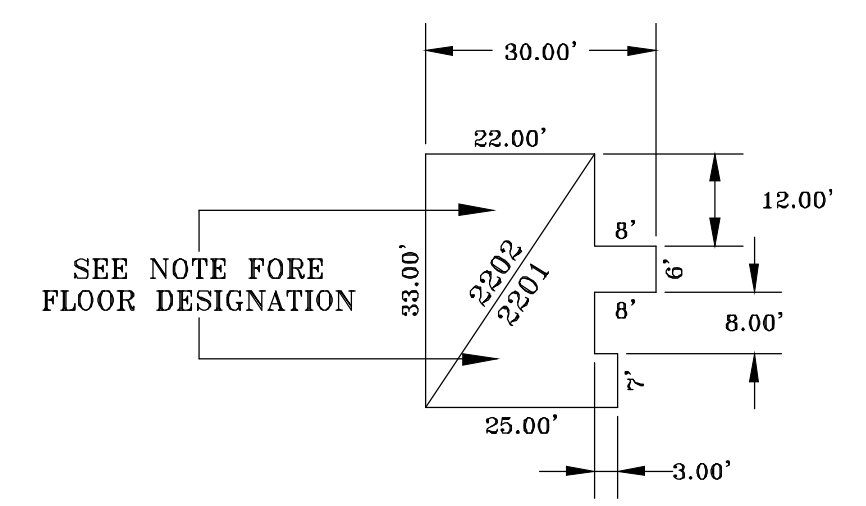
HERITAGE GROVE 2 STORY CONDOS  
 BUILDINGS NO. 5,6,10,11 & 12-(2 UNITS EACH)  
 TOTAL 10 UNITS



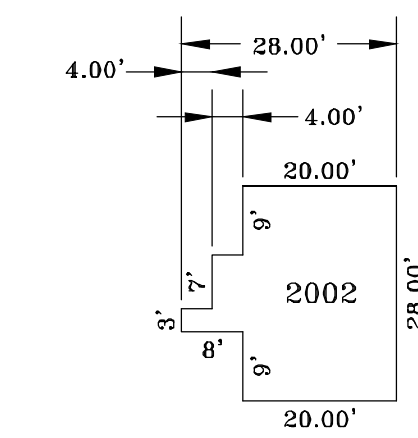
HERITAGE GROVE 3 STORY CONDOS  
 BUILDING NO. 9-(12 UNITS)



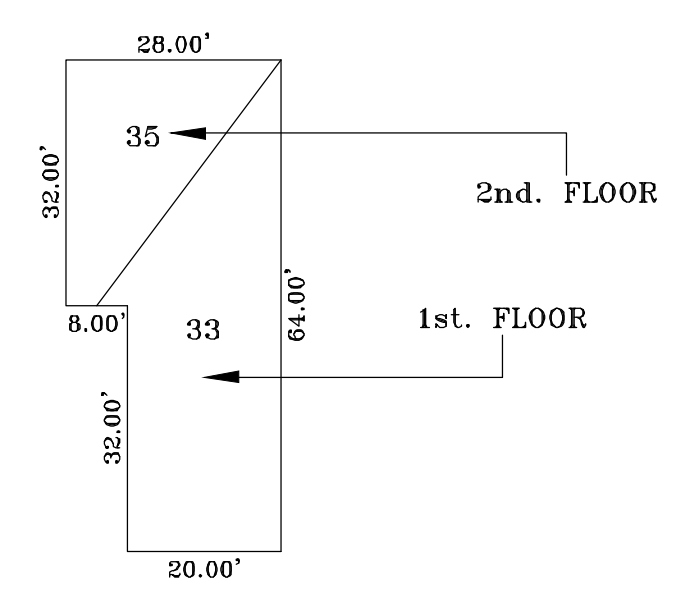
HERITAGE GROVE 2 STORY CONDOS  
 BUILDING NO. 5-(2 UNITS)  
 BUILDINGS 6 & 10-(6 UNITS EACH)  
 BUILDING 11-(4 UNITS)  
 BUILDING 12-(2 UNITS)  
 TOTAL 20 UNITS



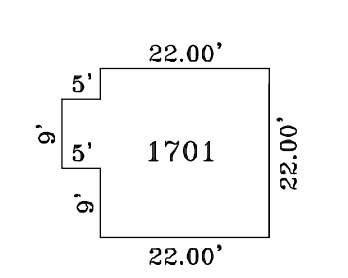
THE MEWS 2 STORY CONDOS  
 BUILDING 18-(10 UNITS)  
 BUILDINGS 1,19,20,30-(2 UNITS EACH)  
 BUILDINGS 3,5,7,8,10,12,21,22-(16 UNITS EACH)  
 BUILDINGS 4,6,9,11,13,15,16,17,23,24,29,-(8 UNITS EACH)  
 BUILDINGS 1,3-13,15-17,19,21-23,29,30-(ODD NUMBER INDICATES 1st.FLR./EVEN 2nd.FLR.)  
 BUILDINGS 18,20 & 24-(ODD NUMBER INDICATES 2nd.FLR./EVEN 1st.FLR.)  
 TOTAL 234 UNITS



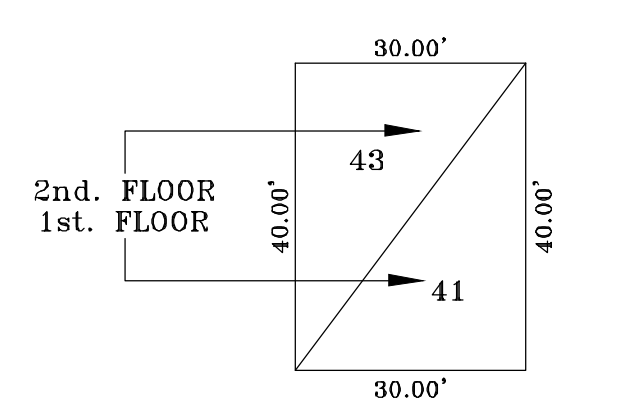
THE MEWS 2 STORY CONDOS  
 BUILDING NO. 28A-(4 UNITS)  
 BUILDINGS NO. 1,18-20,30-(1 UNIT EACH)  
 BUILDINGS NO. 2,4,9,13-15,17,23A,24A,28-(2 UNITS EACH)  
 TOTAL 29 UNITS



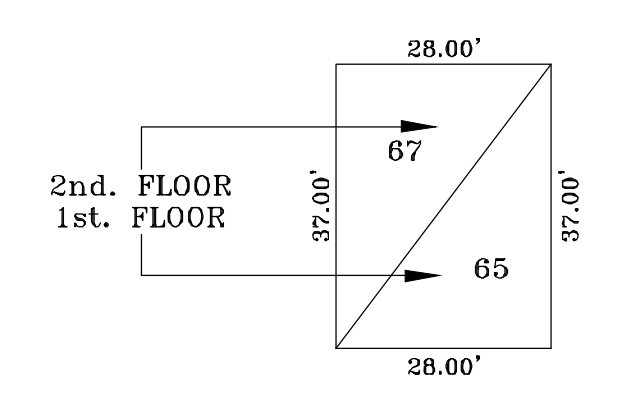
THE MEWS 2 STORY CONDOS  
 BUILDINGS NO. 26-(4 UNITS)  
 BUILDINGS NO. 27-(2 UNITS)



THE MEWS 2 STORY CONDOS  
 BUILDINGS NO. 1,18-20,23A,24A,28,28A,30-(2 UNITS EACH)  
 BUILDINGS NO. 2,4,9,13-15,17-(4 UNITS EACH)  
 TOTAL 46 UNITS



THE MEWS 2 STORY CONDOS  
 BUILDINGS NO. 26-(6 UNITS)



THE MEWS 2 STORY CONDOS  
 BUILDINGS NO. 27-(4 UNITS)

**NOTES:**  
 TAX MAPS ARE NOT FOR TITLE PURPOSES!!  
 THIS MAP HAS BEEN DRAWN USING COMPUTER AIDED DRAFTING/DESIGN (CAD/D) AND COORDINATE GEOMETRY (COGO).

**TAX MAP**  
**TOWNSHIP OF VOORHEES**  
 CAMDEN COUNTY, NEW JERSEY  
 SCALE: 1" = 25'      DATE: DEC; 2001  
**WILLIAM E. ALBURGER, P.L.S.**  
 JCA. ASSOCIATES, INC.  
 1256 NORTH CHURCH STREET SUITE 3  
 MOORESTOWN, NEW JERSEY 08057  
 TO SHOW CONDITIONS AS OF 10-01-2017