

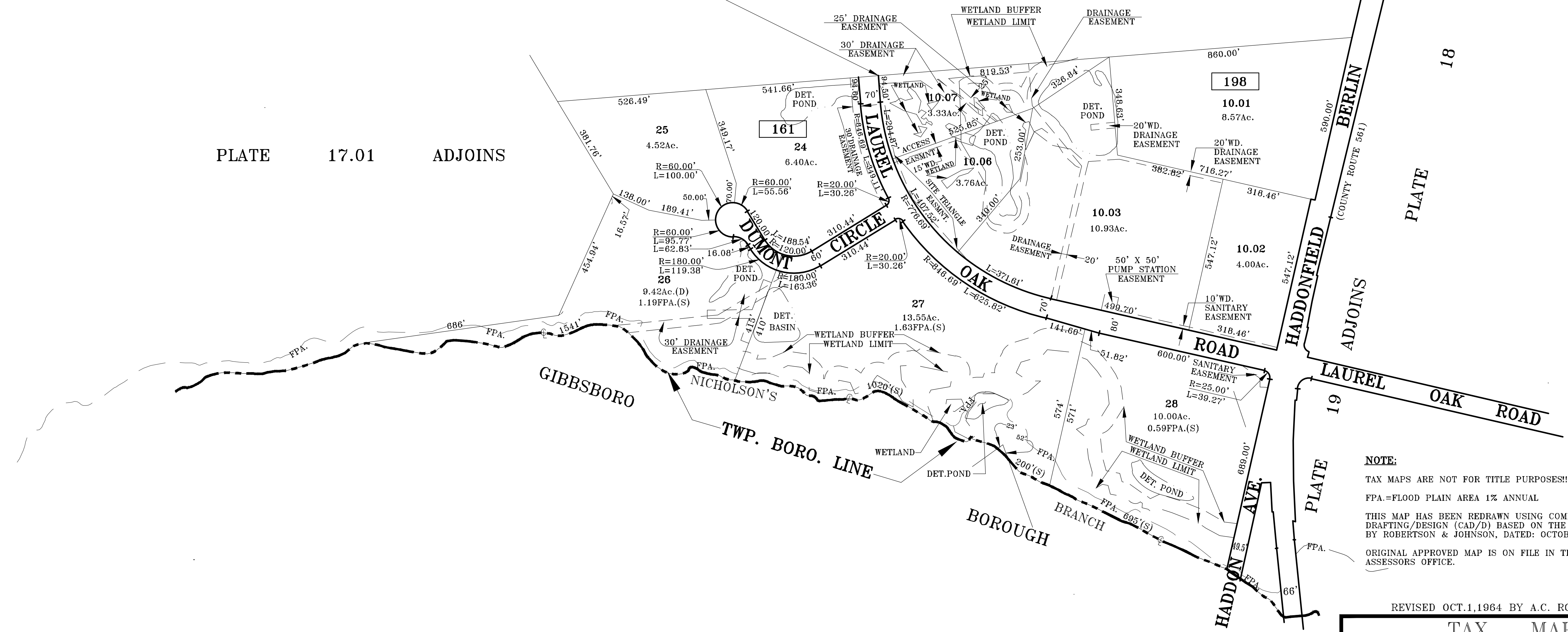
PLATE 13.01 ADJOINS
LOTS 10.03, 10.06, 10.07 IN BLK. 198
GRANT EA. PARTY NECESSARY EASEMENTS
FOR STORM WATER MANAGEMENT BASINS TO BE
MAINTAINED BY AGREEMENT IN
DB5122-0832 THRU 0865, 0866, 0889 & DB5067-0423
LIMITS AND WIDTH NOT DEFINED

LOT 10.06 IN BLOCK 198 GRANTS
ELECTRICAL EASEMENT TO VERIZON
NEW JERSEY AND A.C. ELECTRIC
AND ITS SUCCESSORS IN DB5208-
0133 THRU 0135.
LIMITS AND WIDTH NOT DEFINED

LOT 10.03 IN BLOCK 198 GRANTS
ELECTRICAL EASEMENT TO BELL
ATLANTIC AND A.C. ELECTRIC
AND ITS SUCCESSORS IN DB5121-
0138 THRU 0141.
LIMITS AND WIDTH NOT DEFINED

PLATE 17.01 ADJOINS

ADJOINS
ROAD
18



NOTE:
TAX MAPS ARE NOT FOR TITLE PURPOSES!
FPA=FLOOD PLAIN AREA 1% ANNUAL
THIS MAP HAS BEEN REDRAWN USING COMPUTER AIDED
DRAFTING/DESIGN (CAD/D) BASED ON THE MAP PREPARED
BY ROBERTSON & JOHNSON, DATED: OCTOBER 1, 1961.
ORIGINAL APPROVED MAP IS ON FILE IN THE MUNICIPAL
ASSESSORS OFFICE.

REVISED OCT.1,1964 BY A.C. ROBERTSON

NEW JERSEY DEPARTMENT OF THE TREASURY
DIVISION OF TAXATION
ENGINEERING & RAILROAD TAX BUREAU
APPROVED AS A TAX MAP PURSUANT TO THE
PROVISIONS OF CHAPTER 178, LAWS OF 1913, ETC.
FOR THE DIRECTOR, DIVISION OF TAXATION
BY: *C. Adams*
DATE: NOV 15 1963 SERIAL NO. 408

TAX MAP
TOWNSHIP OF VOORHEES
CAMDEN COUNTY, NEW JERSEY
SCALE: 1"= 200' DATE: DEC; 2001
WILLIAM E. ALBURGER, P.L.S.
JCA ASSOCIATES INC.
1256 NORTH CHURCH STREET SUITE 3
MOORESTOWN, NEW JERSEY 08057
TO SHOW CONDITIONS AS OF 10-01-2017