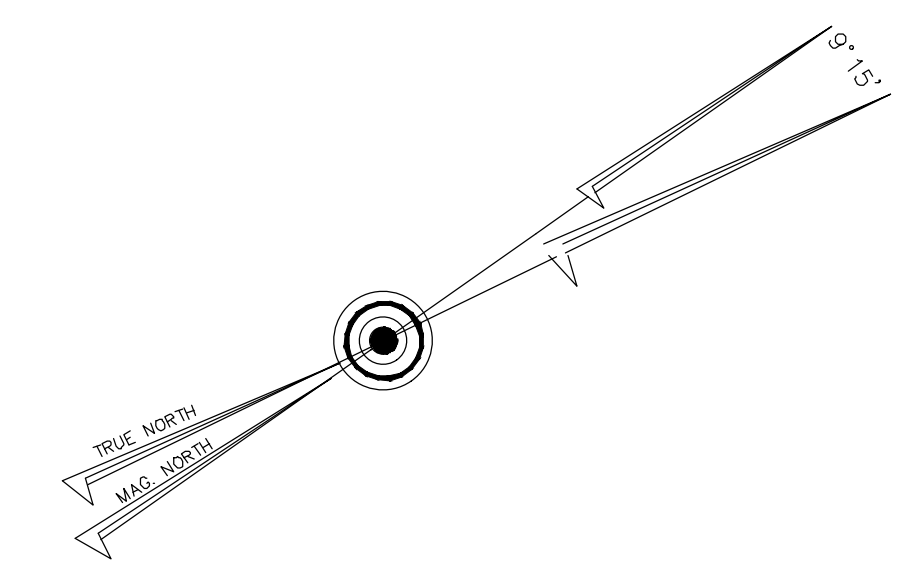
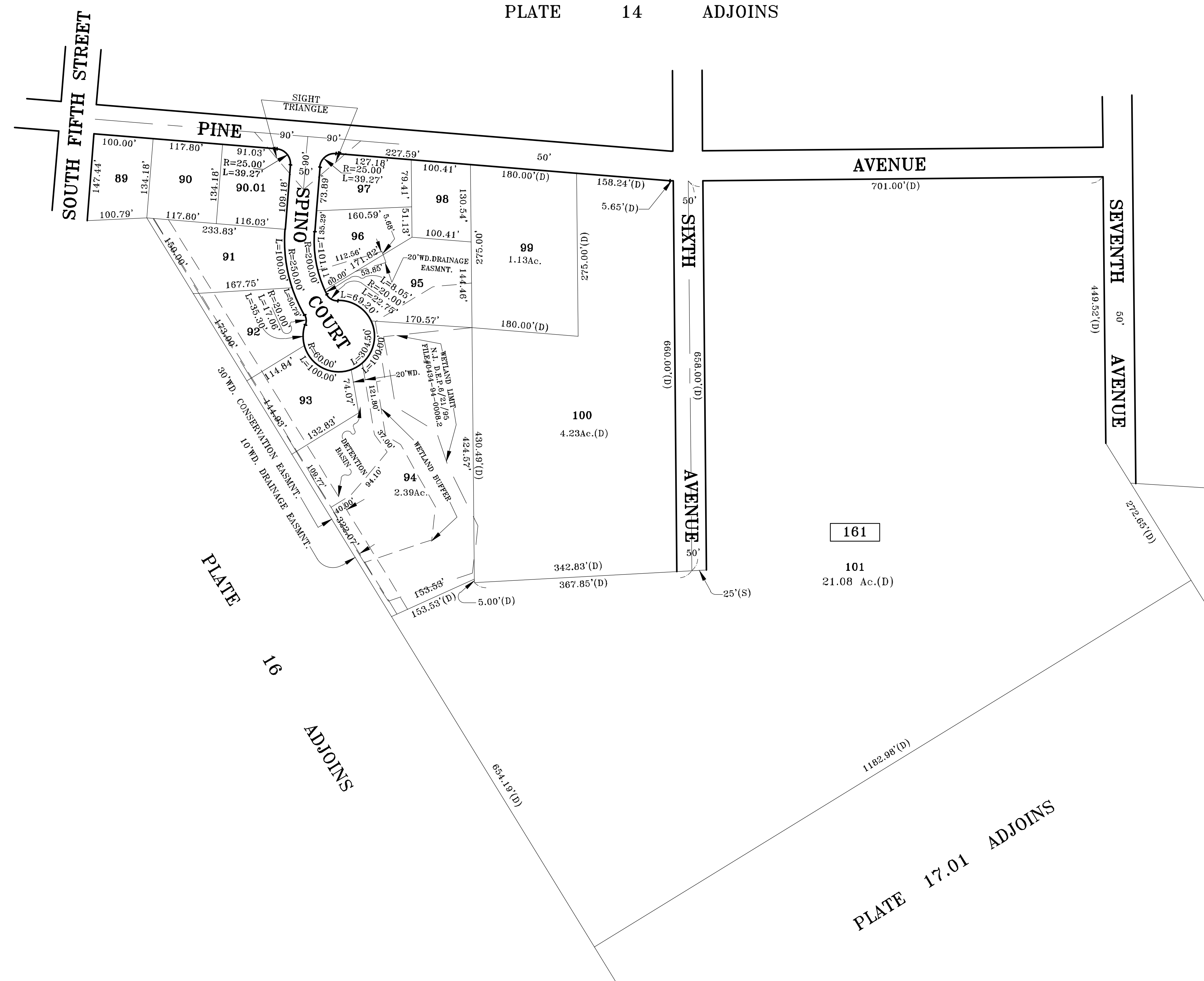


PLATE 14 ADJOINS

PLATE 14 ADJOINS

161

101
21.08 Ac.(D)



THIS MAP HAS BEEN DRAWN USING COMPUTER AIDED DRAFTING/DESIGN (CAD/D) AND COORDINATE GEOMETRY (COGO).

TAX MAP
 TOWNSHIP OF VOORHEES
 CAMDEN COUNTY, NEW JERSEY
 SCALE: 1"=100' DATE: DEC; 1996
 CRAIG F. REMINGTON, L.S.
 REMINGTON & VERNICK ENGINEERS
 232 KINGS HIGHWAY EAST
 HADDONFIELD, NEW JERSEY 08033
 TO SHOW CONDITIONS AS OF 10-01-2017