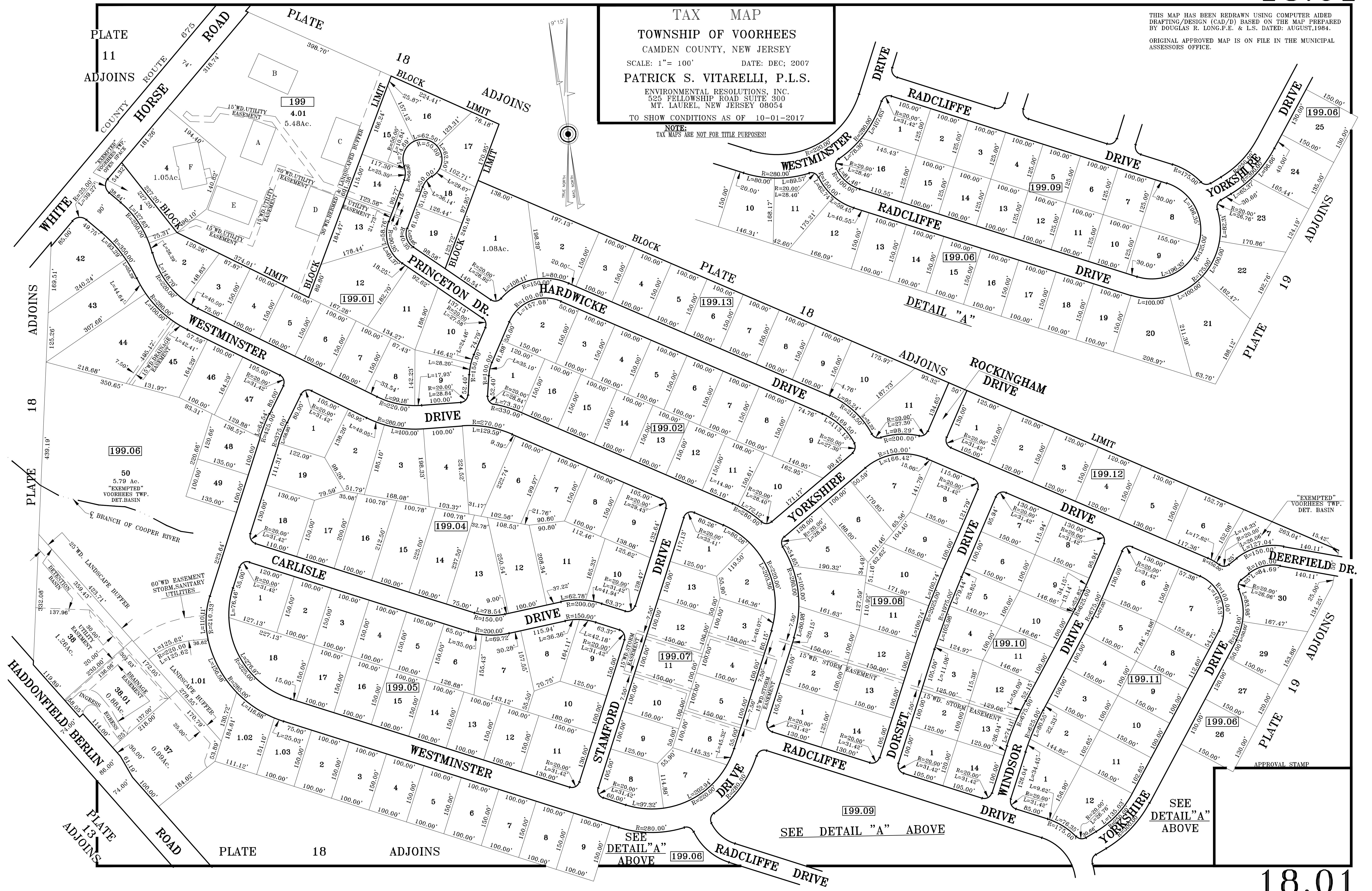


TAX MAP
TOWNSHIP OF VOORHEES
 CAMDEN COUNTY, NEW JERSEY
 SCALE: 1" = 100' DATE: DEC; 2007
PATRICK S. VITARELLI, P.L.S.
 ENVIRONMENTAL RESOLUTIONS, INC.
 525 FELLOWSHIP ROAD SUITE 300
 MT. LAUREL, NEW JERSEY 08054
 TO SHOW CONDITIONS AS OF 10-01-2017

THIS MAP HAS BEEN REDRAWN USING COMPUTER AIDED DRAFTING/DESIGN (CAD/D) BASED ON THE MAP PREPARED BY DOUGLAS R. LONG.P.E. & L.S. DATED: AUGUST,1984.
 ORIGINAL APPROVED MAP IS ON FILE IN THE MUNICIPAL ASSESSORS OFFICE.

NOTE:
 TAX MAPS ARE NOT FOR TITLE PURPOSES!



SEE
 DETAIL "A"
 ABOVE

SEE
 DETAIL "A"
 ABOVE

SEE
 DETAIL "A"
 ABOVE