

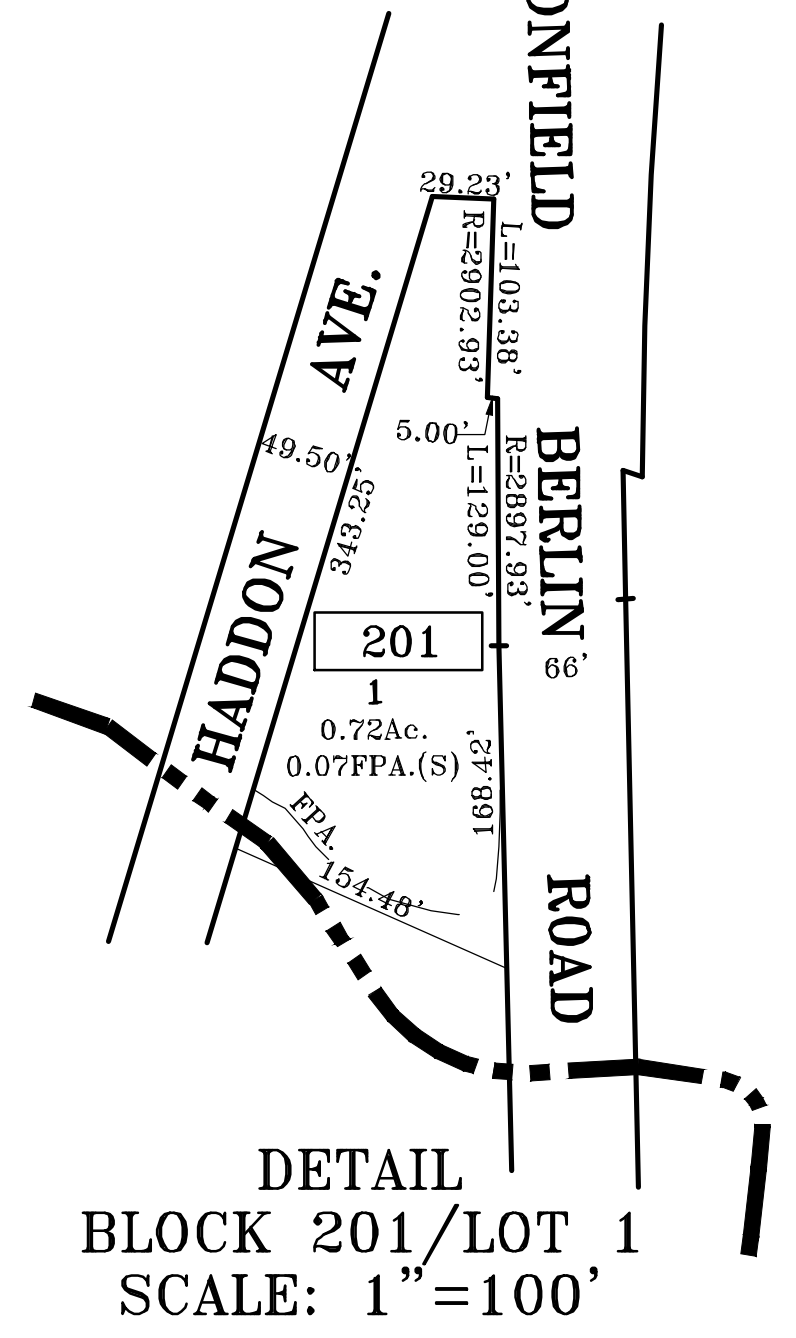
THIS MAP HAS BEEN REDRAWN USING COMPUTER AIDED DRAFTING/DESIGN (CAD/D) BASED ON THE MAP PREPARED BY ROBERTSON & JOHNSON, DATED: OCTOBER 1, 1961. ORIGINAL APPROVED MAP IS ON FILE IN THE MUNICIPAL ASSESSORS OFFICE.

NEW JERSEY DEPARTMENT OF THE TREASURY
 DIVISION OF TAXATION
 ENGINEERING & RAILROAD TAX BUREAU
 APPROVED AS A TAX MAP PURSUANT TO THE PROVISIONS OF CHAPTER 176, LAWS OF 1932, ETC. FOR THE DIRECTOR, DIVISION OF TAXATION
 BY *C. Deane*
 DATE NOV 15 1963 SERIAL NO. 406

NOTE:
 TAX MAPS ARE NOT FOR TITLE PURPOSES!!
 F.P.A. = FLOOD PLAIN AREA

REVISED: OCTOBER, 1, 1964 (A.C. ROBERTSON)

TAX MAP
 TOWNSHIP OF VOORHEES
 CAMDEN COUNTY, NEW JERSEY
 SCALE: 1" = 200' DATE: DEC, 2011
 PATRICK S. VITARELLI, P.L.S.
 ENVIRONMENTAL RESOLUTIONS, INC.
 525 FELLOWSHIP ROAD SUITE 300
 MT. LAUREL, NEW JERSEY 08054
 TO SHOW CONDITIONS AS OF 10-01-2017



DETAIL
 BLOCK 201/LOT 1
 SCALE: 1"=100'

