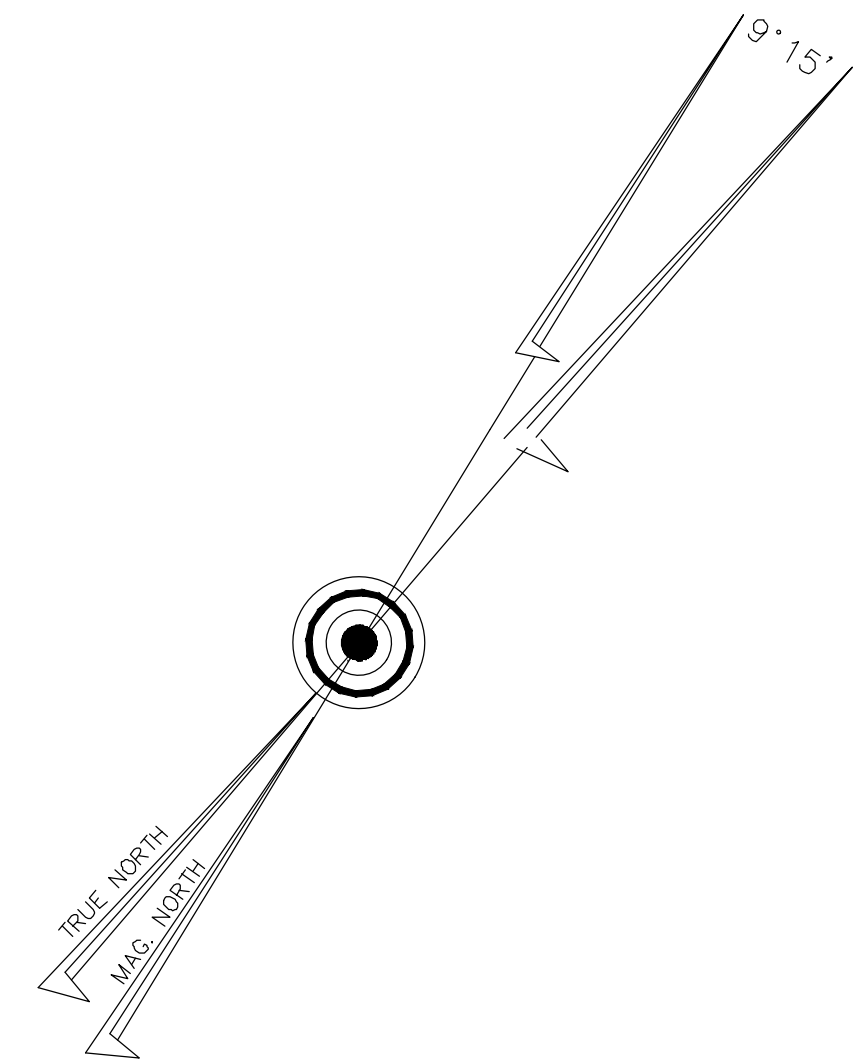
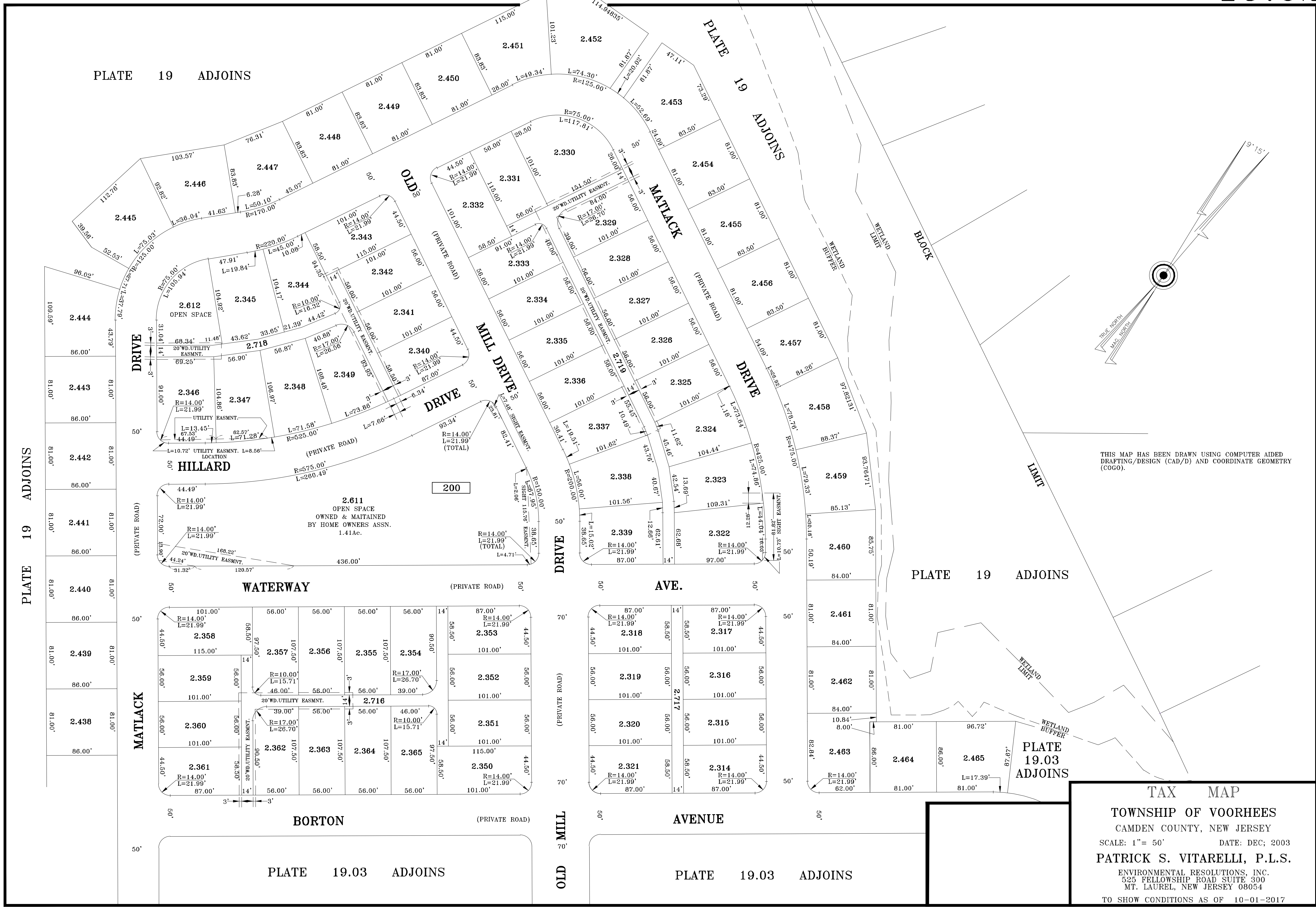


PLATE 19 ADJOINS



THIS MAP HAS BEEN DRAWN USING COMPUTER AIDED DRAFTING/DESIGN (CAD/D) AND COORDINATE GEOMETRY (COGO).

TAX MAP
 TOWNSHIP OF VORHEES
 CAMDEN COUNTY, NEW JERSEY
 SCALE: 1" = 50' DATE: DEC, 2003
 PATRICK S. VITARELLI, P.L.S.
 ENVIRONMENTAL RESOLUTIONS, INC.
 525 FELLOWSHIP ROAD SUITE 300
 MT. LAUREL, NEW JERSEY 08054
 TO SHOW CONDITIONS AS OF 10-01-2017