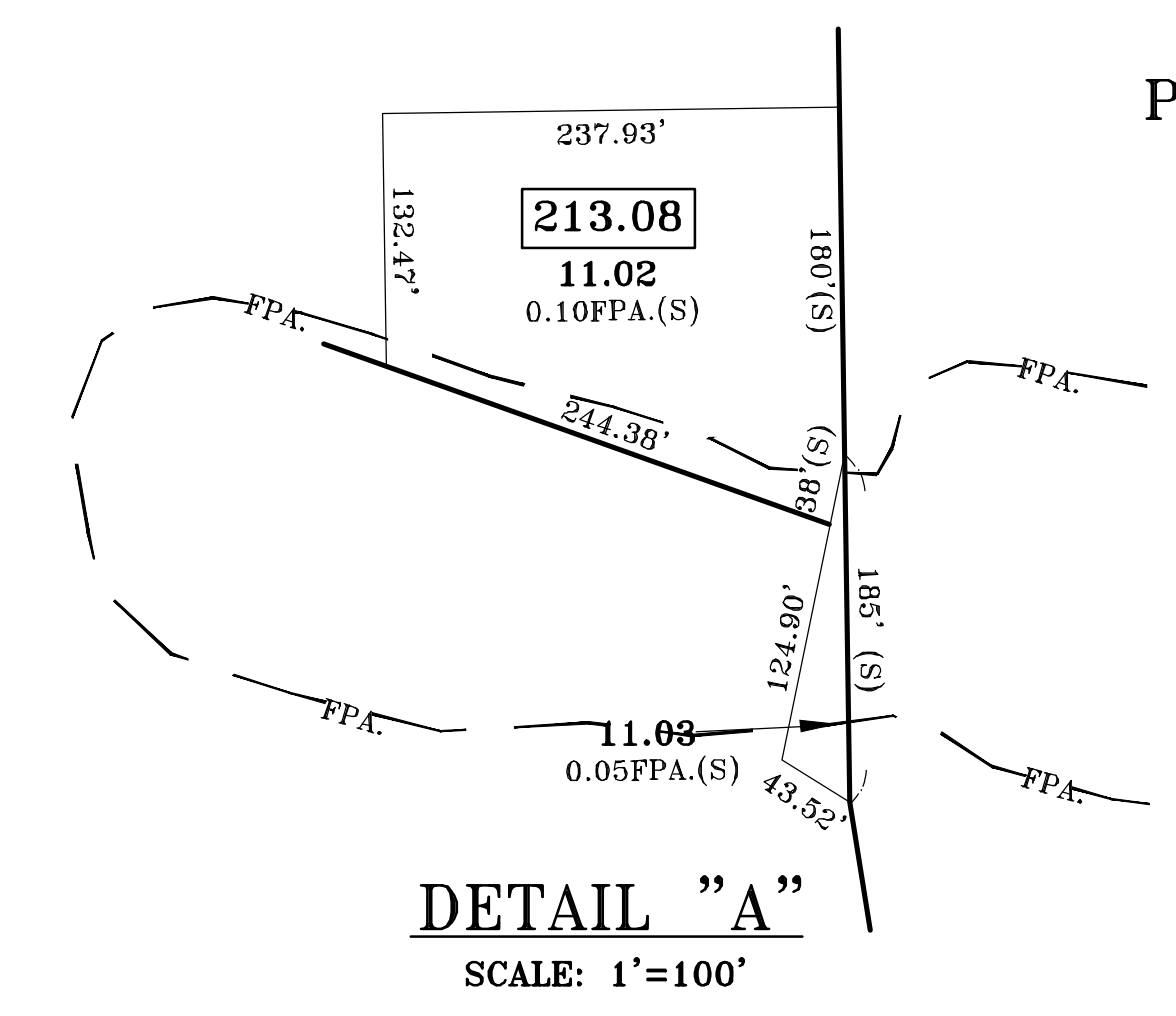


SEE
DETAIL "A"



DETAIL "A"
SCALE: 1"=100'

NOTE:
TAX MAPS ARE NOT FOR TITLE PURPOSES!
FPA.=FLOOD PLAIN AREA 1% ANNUAL
THIS MAP HAS BEEN REDRAWN USING COMPUTER AIDED DRAFTING/DESIGN (CAD/D) BASED ON THE MAP PREPARED BY CRAIG F. REMINGTON, L.S. DATED: JULY 6, 1989. COPY SINCE 1993 HAS BEEN UPGRADED ANNUALLY BY USE OF COMPUTER AIDED DRAFTING/DESIGN (CAD/D) AND COORDINATE GEOMETRY (COGO).
ORIGINAL APPROVED MAP IS ON FILE IN THE MUNICIPAL ASSESSORS OFFICE.

TAX MAP
TOWNSHIP OF VOORHEES
CAMDEN COUNTY, NEW JERSEY
SCALE: 1"=200' DATE: DEC; 1998
CRAIG F. REMINGTON, L.S.
REMINGTON & VERNICK ENGINEERS
232 KINGS HIGHWAY EAST
HADDONFIELD, NEW JERSEY 08033
TO SHOW CONDITIONS AS OF 10-01-2017