

PLATE 29.02 ADJOINS

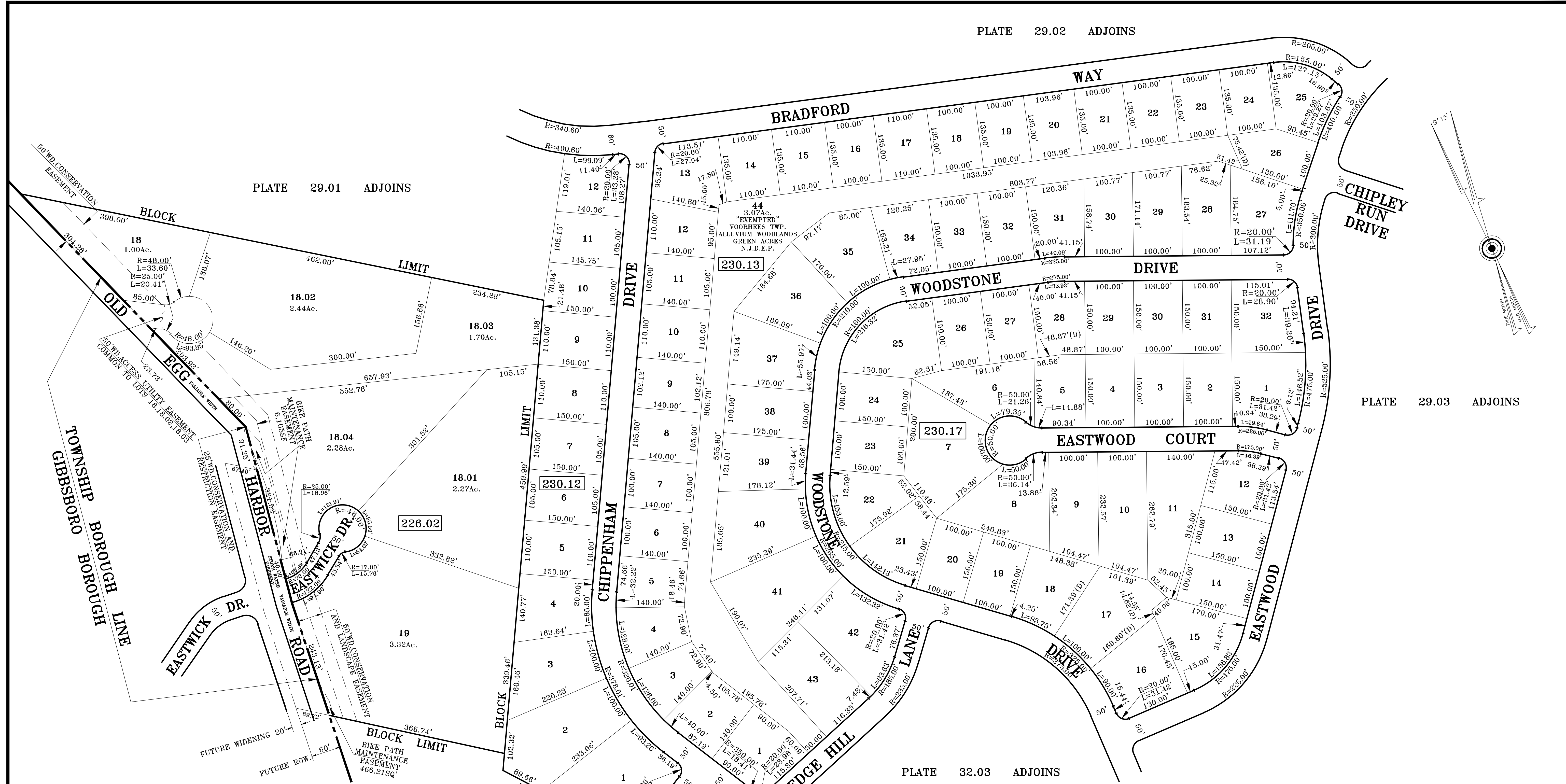
PLATE 29.01 ADJOINS

PLATE 29.03 ADJOINS

PLATE 32.03 ADJOINS

PLATE 32.03 ADJOINS

PLATE 32.03 ADJOINS



**NOTE:**  
 TAX MAPS ARE NOT FOR TITLE PURPOSES!  
 THIS MAP HAS BEEN REDRAWN USING COMPUTER AIDED DRAFTING/DESIGN (CAD/D) BASED ON THE MAP PREPARED BY JOHN G. STROKA, P.E., PA. DATED: APRIL, 1977. AS A SCANNED COPY SINCE 1993, HAS BEEN UPGRADED ANNUALLY BY USE OF COMPUTER AIDED DRAFTING/DESIGN (CAD/D) AND COORDINATE GEOMETRY (COGO).  
 ORIGINAL APPROVED MAP IS ON FILE IN THE MUNICIPAL ASSESSORS OFFICE.

**TAX MAP**  
**TOWNSHIP OF VOORHEES**  
 CAMDEN COUNTY, NEW JERSEY  
 SCALE: 1"=100'      DATE: DEC; 2008  
**PATRICK S. VITARELLI, P.L.S.**  
 ENVIRONMENTAL RESOLUTIONS, INC.  
 525 FELLOWSHIP ROAD SUITE 300  
 MT. LAUREL, NEW JERSEY 08054  
 TO SHOW CONDITIONS AS OF 10-01-2017