

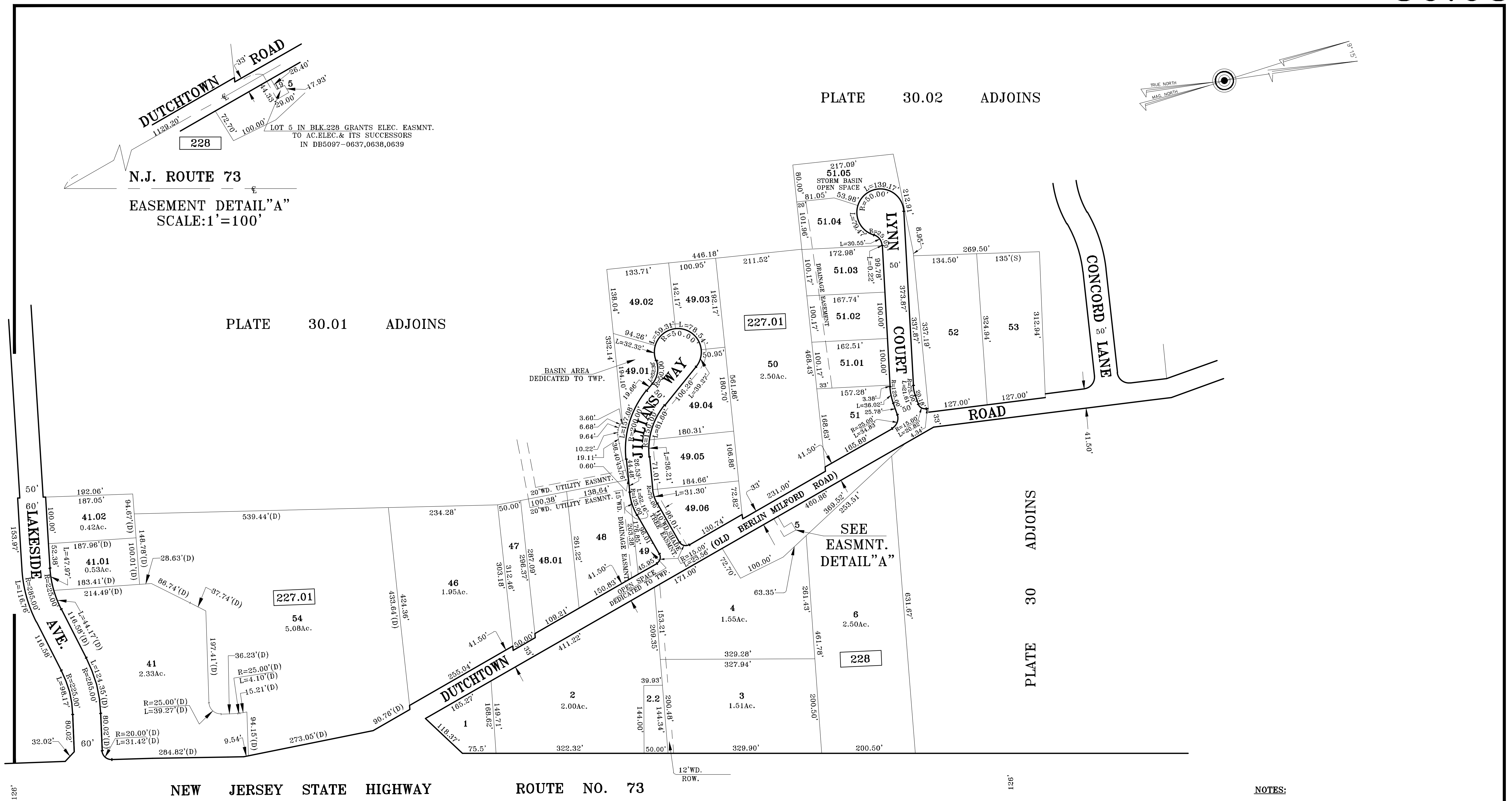
PLATE 30.02 ADJOINS

PLATE 30.01 ADJOINS

PLATE 34 ADJOINS

PLATE 30 ADJOINS

N.J. ROUTE 73
EASEMENT DETAIL "A"
SCALE: 1"=100'



NEW JERSEY STATE HIGHWAY ROUTE NO. 73

PLATE 31 ADJOINS

SIGNAL HILL DR.

NOTES:
TAX MAPS ARE NOT FOR TITLE PURPOSES!!
THIS MAP HAS BEEN DRAWN USING COMPUTER AIDED
DRAFTING/DESIGN (CAD/D) AND COORDINATE GEOMETRY
(COGO).

TAX MAP
TOWNSHIP OF VORHEES
CAMDEN COUNTY, NEW JERSEY
SCALE: 1"=100' DATE: DEC; 2006
PATRICK S. VITARELLI, P.L.S.
ENVIRONMENTAL RESOLUTIONS, INC.
525 FELLOWSHIP ROAD SUITE 300
MT. LAUREL, NEW JERSEY 08054
TO SHOW CONDITIONS AS OF 10-01-2017