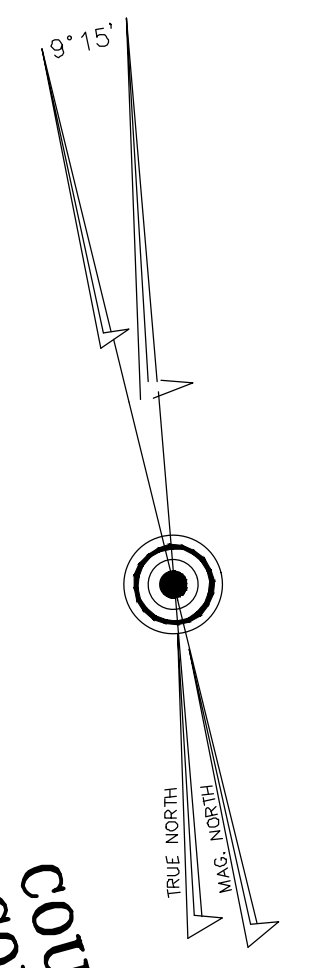


NOTES:
 TAX MAPS ARE NOT FOR TITLE PURPOSES!!

THIS MAP HAS BEEN REDRAWN USING COMPUTER AIDED DRAFTING/DESIGN (CAD/D) BASED ON THE MAP PREPARED BY DOUGLAS R. LONG, P.E., L.S., DATED: NOVEMBER, 1981. AS A SCANNED COPY SINCE 1993, HAS BEEN UPGRADED ANNUALLY BY USE OF COMPUTER AIDED DRAFTING/DESIGN (CAD/D) AND COORDINATE GEOMETRY (COGO).

ORIGINAL APPROVED MAP IS ON FILE IN THE MUNICIPAL ASSESSORS OFFICE.



TAX MAP
 TOWNSHIP OF VOORHEES
 CAMDEN COUNTY, NEW JERSEY
 SCALE: 1"=100' DATE: DEC:2011
 PATRICK S. VITARELLI, P.L.S.
 ENVIRONMENTAL RESOLUTIONS, INC.
 525 FELLOWSHIP ROAD SUITE 300
 MT. LAUREL, NEW JERSEY 08054
 TO SHOW CONDITIONS AS OF 10-01-2017