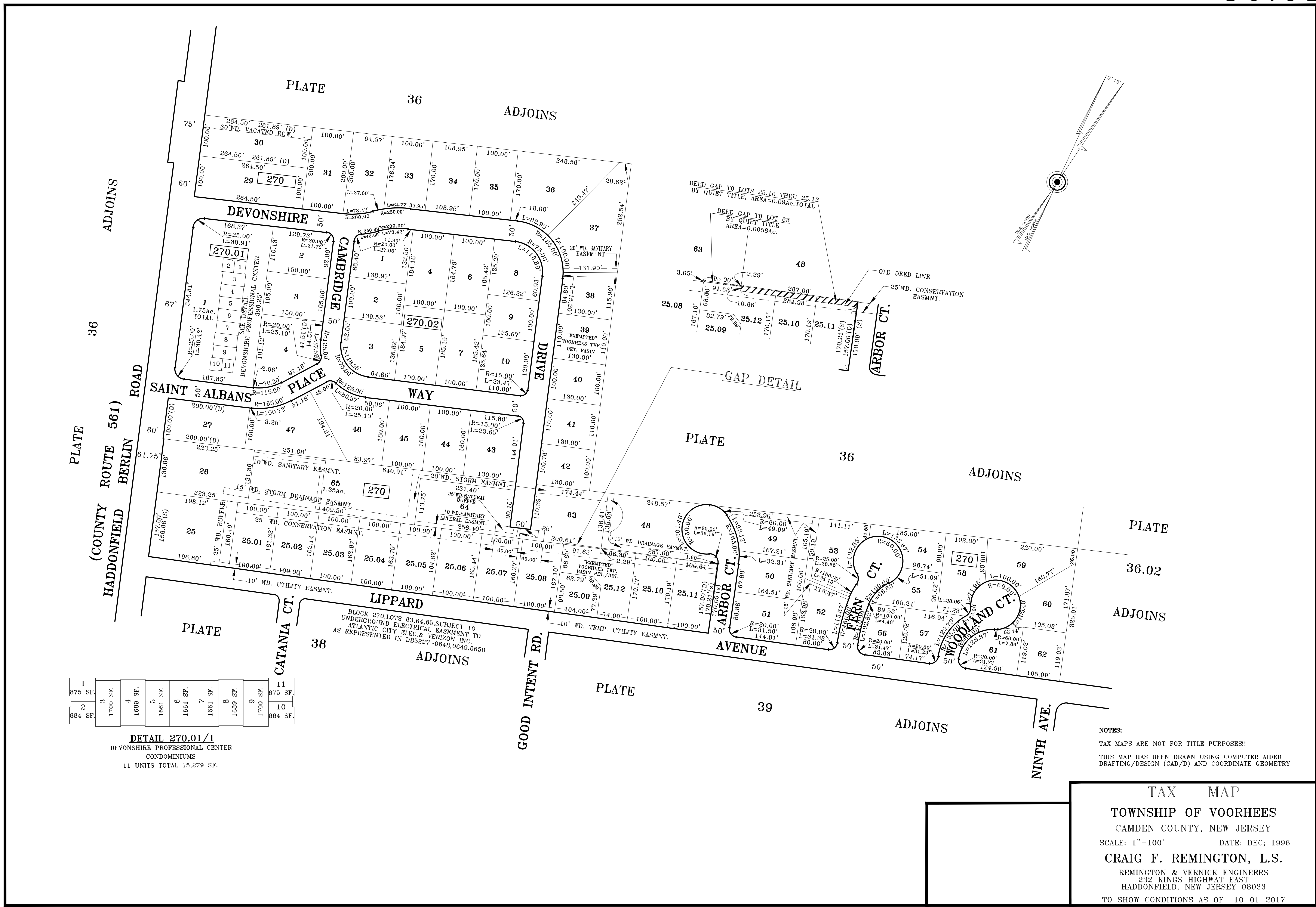


1	875 SF.	11	875 SF.
2	884 SF.	10	884 SF.
3	1700 SF.	9	1700 SF.
4	1689 SF.	8	1689 SF.
5	1681 SF.	7	1681 SF.
6	1681 SF.	6	1681 SF.
7	1681 SF.	5	1681 SF.
8	1689 SF.	4	1689 SF.
9	1700 SF.	3	1700 SF.
10	884 SF.	2	884 SF.
11	875 SF.	1	875 SF.

DETAIL 270.01/1
 DEVONSHIRE PROFESSIONAL CENTER
 CONDOMINIUMS
 11 UNITS TOTAL 15,279 SF.



NOTES:
 TAX MAPS ARE NOT FOR TITLE PURPOSES!
 THIS MAP HAS BEEN DRAWN USING COMPUTER AIDED
 DRAFTING/DESIGN (CAD/D) AND COORDINATE GEOMETRY

TAX MAP
 TOWNSHIP OF VORHEES
 CAMDEN COUNTY, NEW JERSEY
 SCALE: 1"=100' DATE: DEC; 1996
 CRAIG F. REMINGTON, L.S.
 REMINGTON & VERNICK ENGINEERS
 232 KINGS HIGHWAY EAST
 HADDONFIELD, NEW JERSEY 08033
 TO SHOW CONDITIONS AS OF 10-01-2017