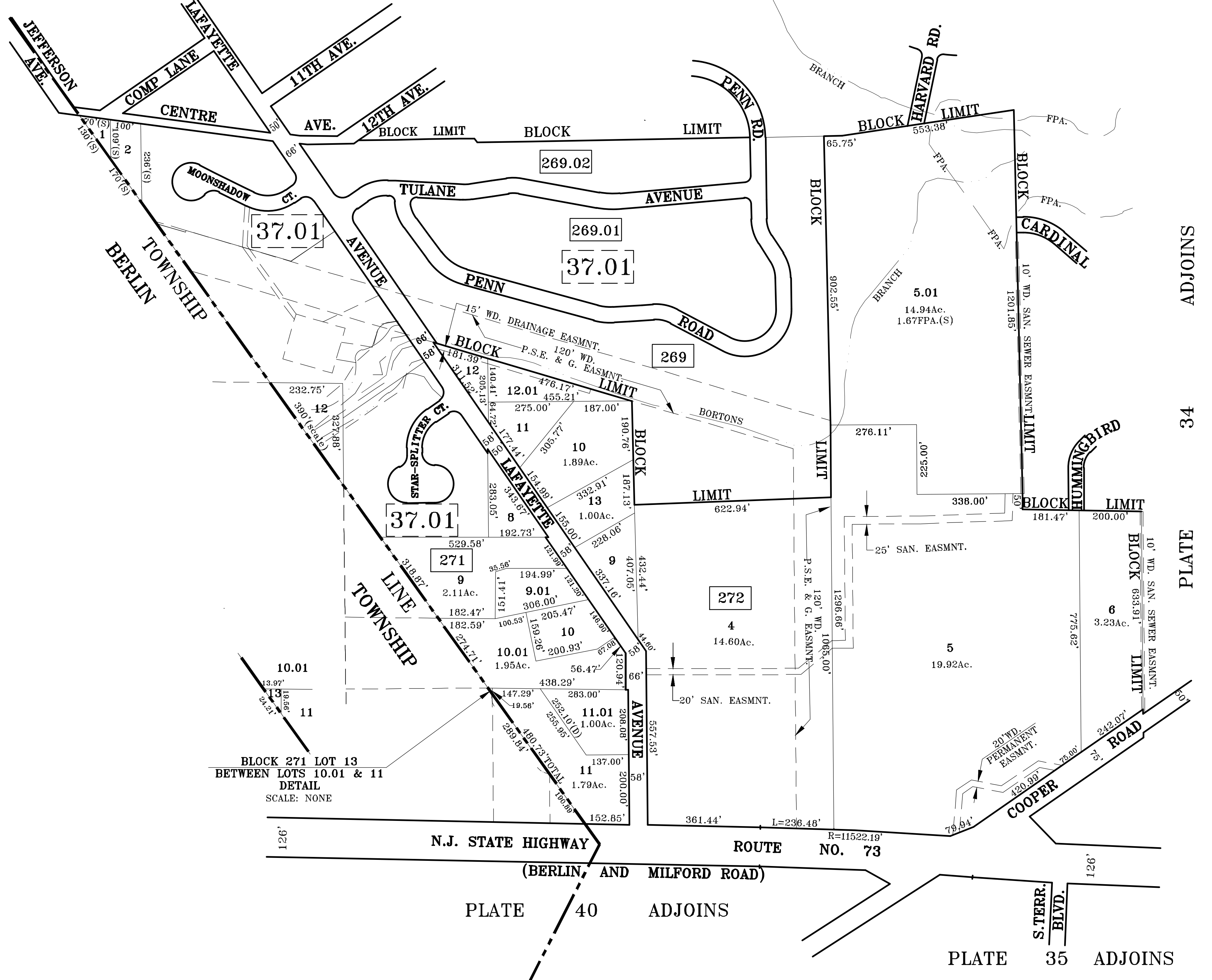


PLATE 39 ADJOINS PLATE 33 ADJOINS



BLOCK 271 LOT 13
BETWEEN LOTS 10.01 & 11
DETAIL
SCALE: NONE

NOTES:
 FPA.=FLOOD PLAIN AREA 1% ANNUAL
 TAX MAPS ARE NOT FOR TITLE PURPOSES!!
 THIS MAP HAS BEEN REDRAWN USING COMPUTER AIDED DRAFTING/DESIGN (CAD/D) BASED ON THE MAP PREPARED BY ROBERTSON & JOHNSON, DATED: OCTOBER 1, 1962. AS A SCANNED COPY SINCE 1993, HAS BEEN UPGRADED ANNUALLY BY USE OF COMPUTER AIDED DRAFTING/DESIGN (CAD/D) AND COORDINATE GEOMETRY (COGO).
 ORIGINAL APPROVED MAP IS ON FILE IN THE MUNICIPAL ASSESSORS OFFICE.

REVISED: OCTOBER, 1, 1964 (A.C. ROBERTSON)

TAX MAP
TOWNSHIP OF VOORHEES
 CAMDEN COUNTY, NEW JERSEY
 SCALE: 1"=200' DATE: DEC; 1998
CRAIG F. REMINGTON, L.S.

NEW JERSEY DEPARTMENT OF THE TREASURY
 DIVISION OF TAXATION
 ENGINEERING & RAILROAD TAX BUREAU
 APPROVED AS A TAX MAP PURSUANT TO THE PROVISIONS OF CHAPTER 175, LAWS OF 1913, ETC. FOR THE DIRECTOR, DIVISION OF TAXATION
 BY: *C. Remington*
 DATE: **NOV 15 1993** STATE SUPERVISOR SERIAL NO. **408**

REMINGTON & VERNICK ENGINEERS
 232 KINGS HIGHWAY EAST
 HADDONFIELD, NEW JERSEY 08033
 TO SHOW CONDITIONS AS OF 10-01-2017