

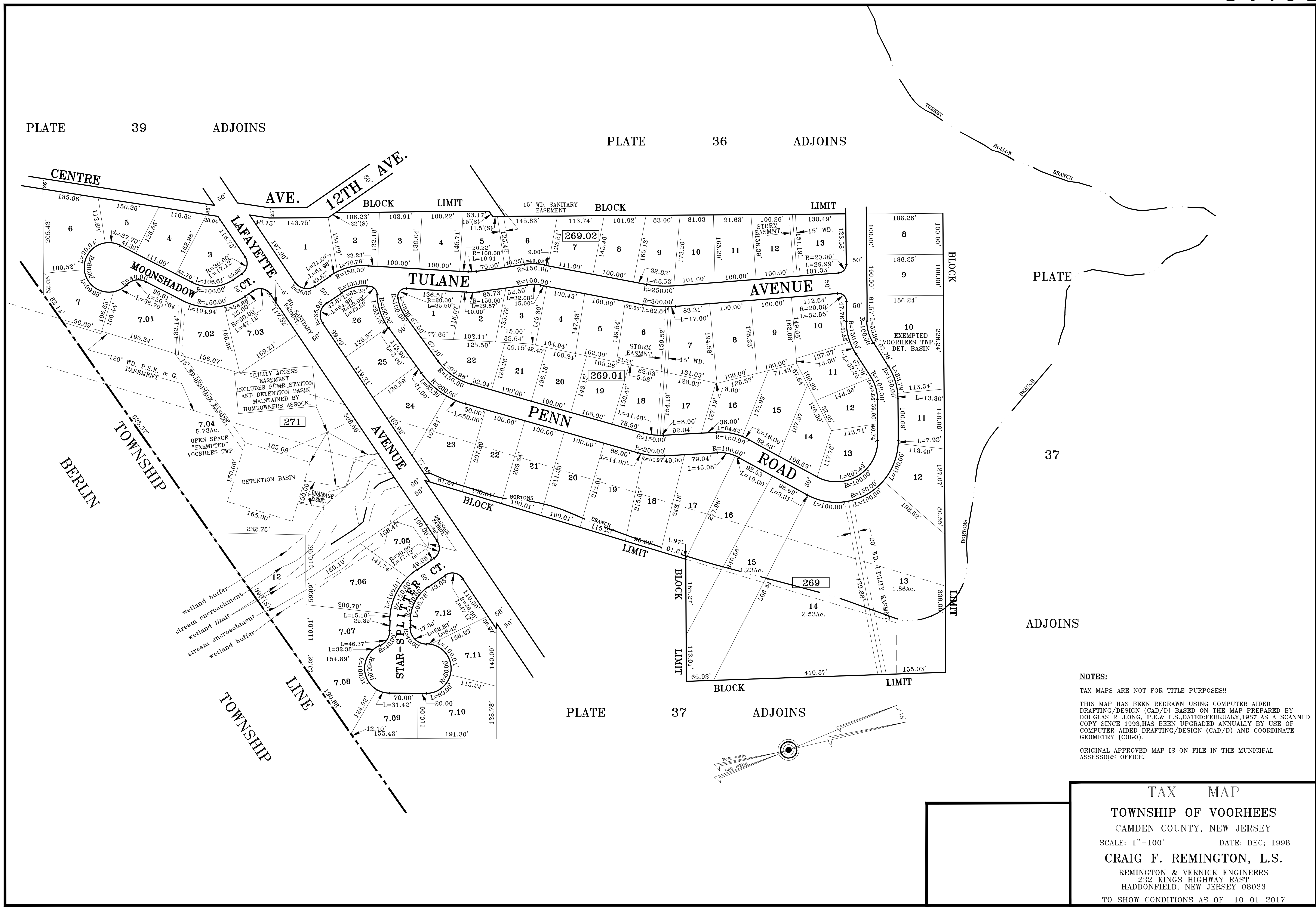
PLATE 39 ADJOINS

PLATE 36 ADJOINS

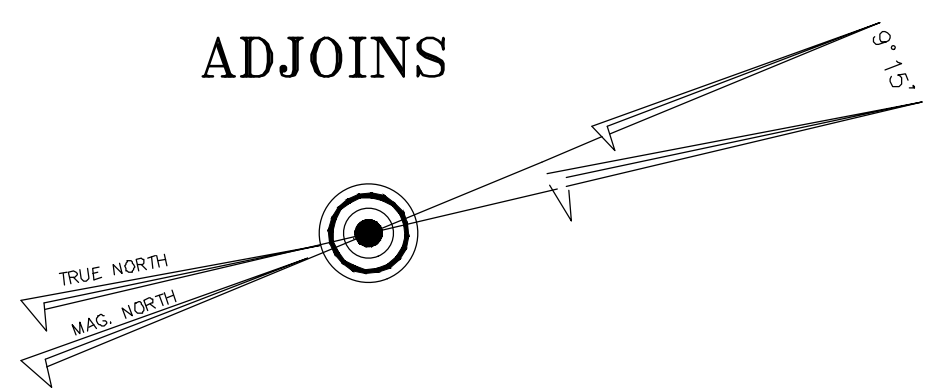
PLATE 37

PLATE 37 ADJOINS

ADJOINS



**NOTES:**  
 TAX MAPS ARE NOT FOR TITLE PURPOSES!!  
 THIS MAP HAS BEEN REDRAWN USING COMPUTER AIDED DRAFTING/DESIGN (CAD/D) BASED ON THE MAP PREPARED BY DOUGLAS R. LONG, P.E. & L.S., DATED FEBRUARY, 1987, AS A SCANNED COPY SINCE 1993, HAS BEEN UPGRADED ANNUALLY BY USE OF COMPUTER AIDED DRAFTING/DESIGN (CAD/D) AND COORDINATE GEOMETRY (COGO).  
 ORIGINAL APPROVED MAP IS ON FILE IN THE MUNICIPAL ASSESSORS OFFICE.



**TAX MAP**  
**TOWNSHIP OF VOORHEES**  
 CAMDEN COUNTY, NEW JERSEY  
 SCALE: 1"=100'      DATE: DEC; 1998  
**CRAIG F. REMINGTON, L.S.**  
 REMINGTON & VERNICK ENGINEERS  
 232 KINGS HIGHWAY EAST  
 HADDONFIELD, NEW JERSEY 08033  
 TO SHOW CONDITIONS AS OF 10-01-2017