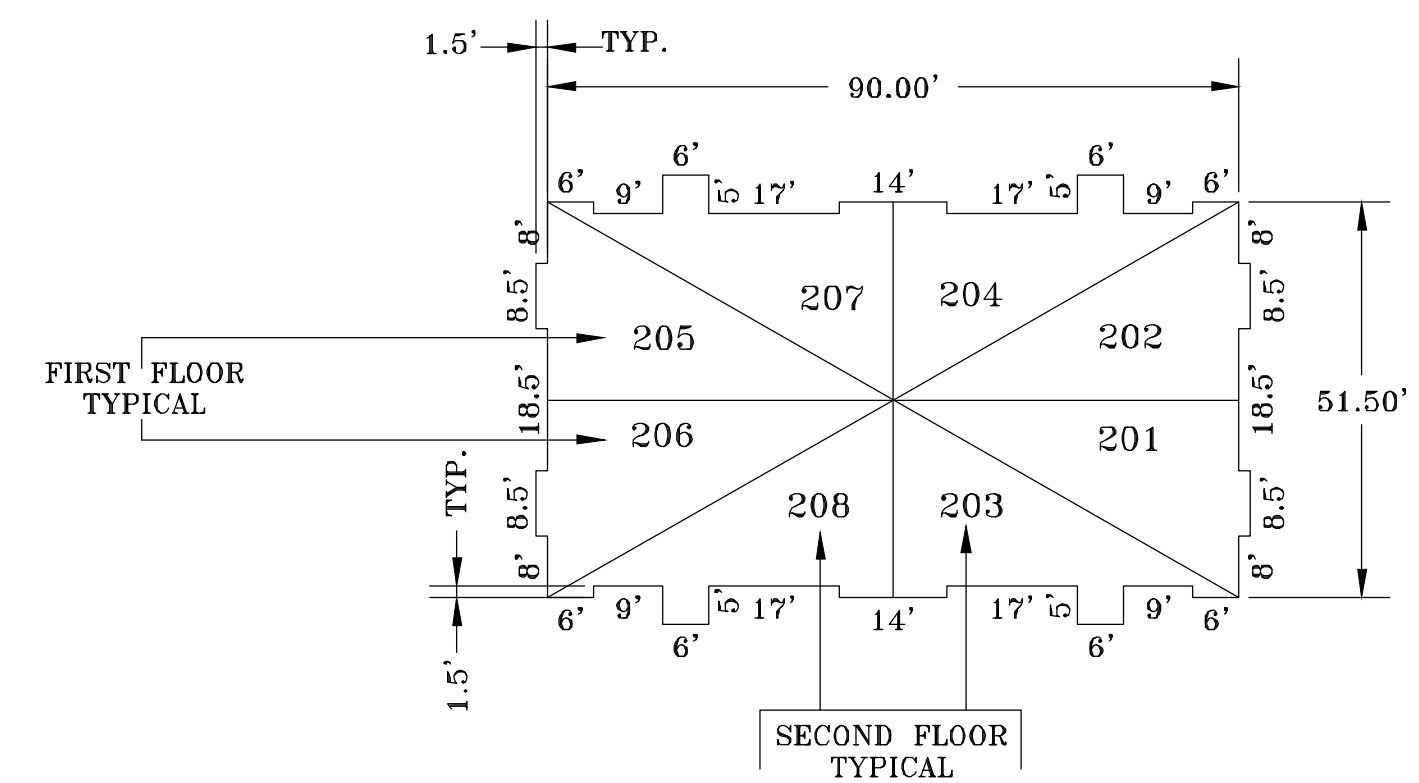
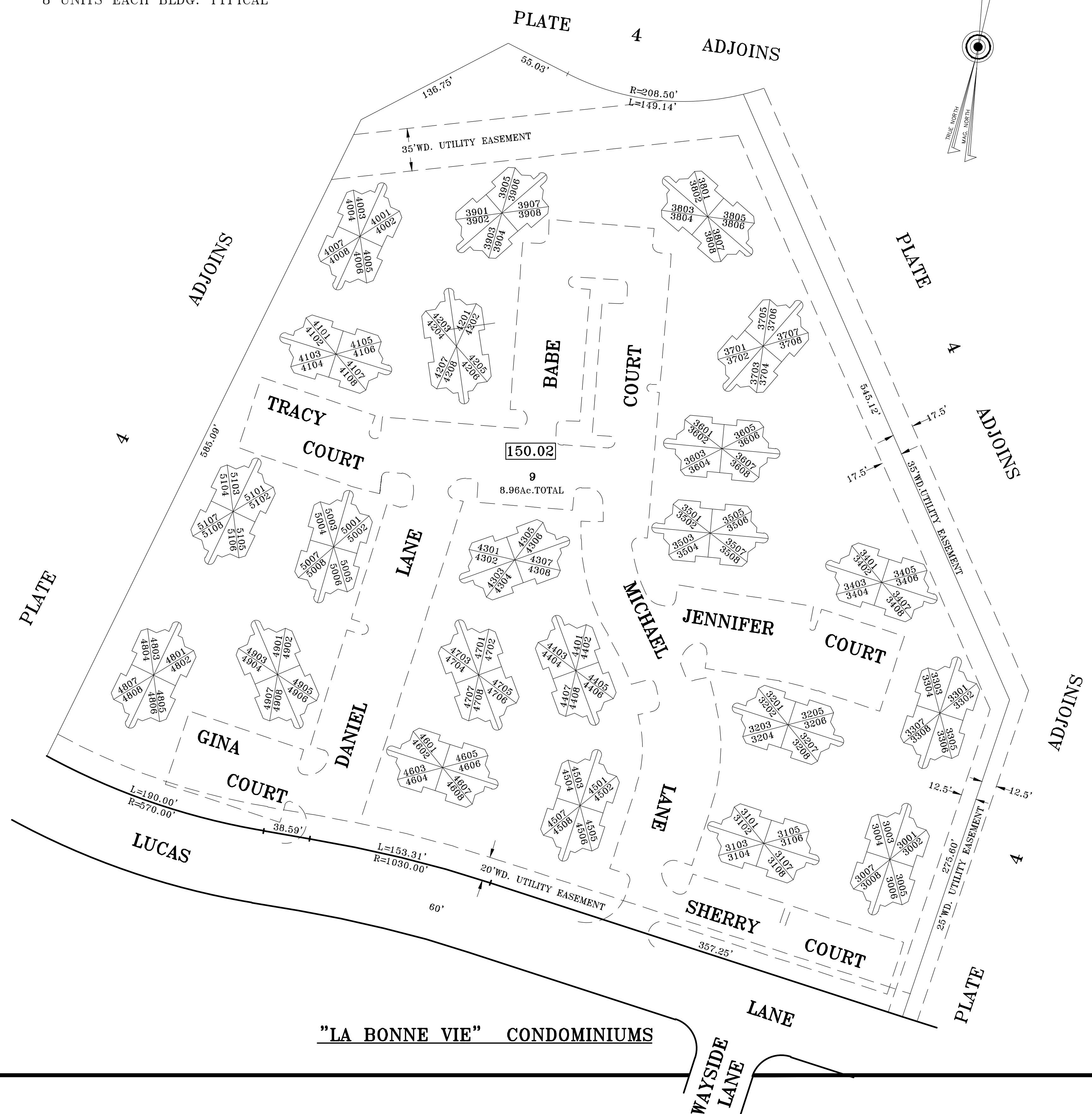


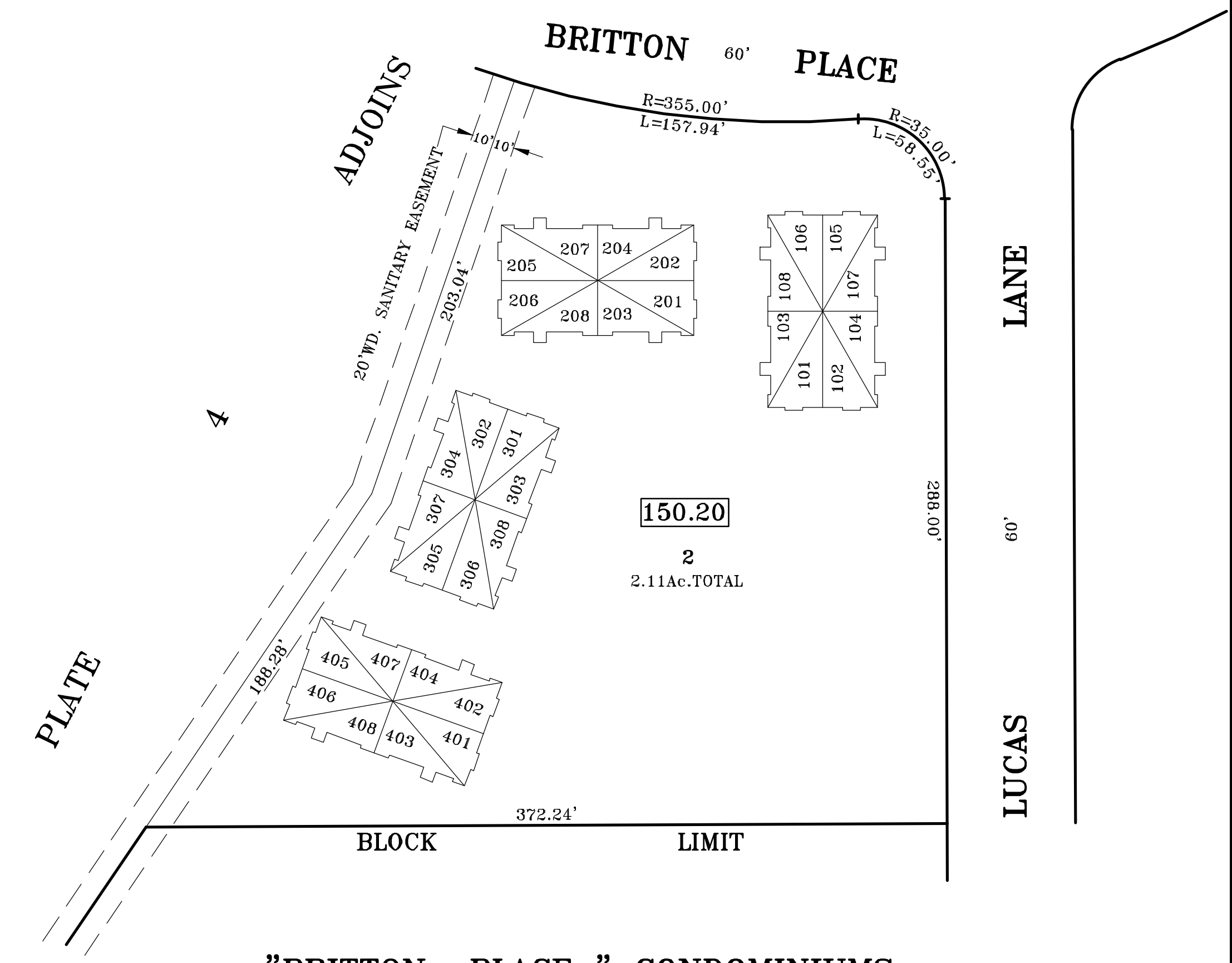
"LA BONNE VIE" BLDG. CONDO
8 UNITS EACH BLDG. TYPICAL



"BRITTON PLACE" BLDG. CONDO
8 UNITS EACH BLDG. TYPICAL



"LA BONNE VIE" CONDOMINIUMS



"BRITTON PLACE" CONDOMINIUMS

THIS MAP HAS BEEN REDRAWN USING COMPUTER AIDED DRAFTING/DESIGN (CAD/D) BASED ON THE MAP PREPARED BY DOUGLAS R. LONG, DATED: OCTOBER 1986.
ORIGINAL APPROVED MAP IS ON FILE IN THE MUNICIPAL ASSESSORS OFFICE.

TAX MAP
TOWNSHIP OF VOORHEES
 CAMDEN COUNTY, NEW JERSEY
 SCALE: 1"=50' DATE: DEC; 2002
PATRICK S. VITARELLI, P.L.S.
 ENVIRONMENTAL RESOLUTIONS, INC.
 525 FELLOWSHIP ROAD SUITE 300
 MT. LAUREL, NEW JERSEY 08054
 TO SHOW CONDITIONS AS OF 10-01-2017