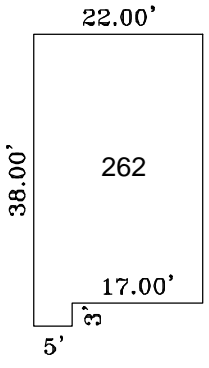
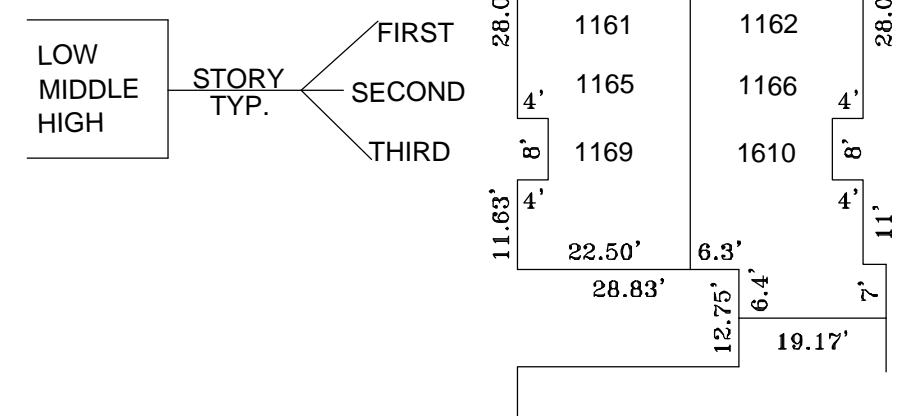


TOMLINSON GREEN CONDOS
TYPICAL 2-STORY UNIT FOR ALL OF
BUILDINGS NO. 25 AND 29
AND UNITS 106, 108, AND 110
IN BLDG. NO. 30 TOTAL 17 UNITS



TOMLINSON GREEN CONDOS
TYPICAL 2-STORY UNIT FOR ALL OF
BUILDINGS NO. 26 AND 27
IN BLDG. NO. 30 TOTAL 16 UNITS



TOMLINSON GREEN CONDOS
3 STORY BUILDINGS NO. 28 AND 31
24 UNITS EACH BLDG.

THIS MAP HAS BEEN DRAWN USING COMPUTER AIDED
DRAFTING/DESIGN (CAD/D) AND COORDINATE GEOMETRY
(COGO).

TAX MAP
TOWNSHIP OF VOORHEES
CAMDEN COUNTY, NEW JERSEY
SCALE: 1"=50' DATE: DEC; 2002
PATRICK S. VITARELLI, P.L.S.
ENVIRONMENTAL RESOLUTIONS, INC.
525 FELLOWSHIP ROAD SUITE 300
MT. LAUREL, NEW JERSEY 08054
TO SHOW CONDITIONS AS OF 10-01-2017